

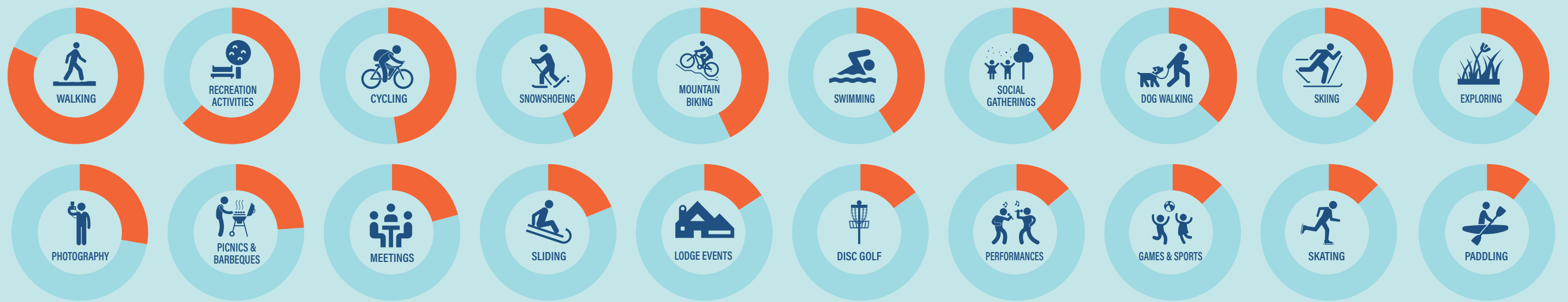


PICTURE THE FUTURE OF ODELL AND KILLARNEY LAKE PARKS!

PUBLIC CONSULTATION SUMMARY

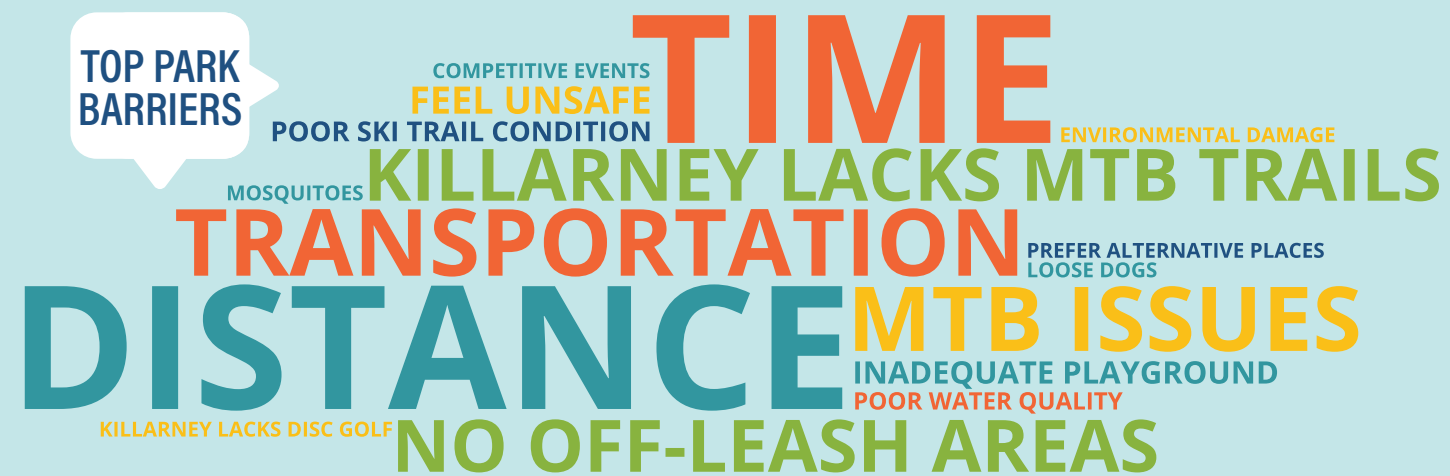
July 2017

TOP ACTIVITIES



Love that we can access the wilderness in the middle of the city!

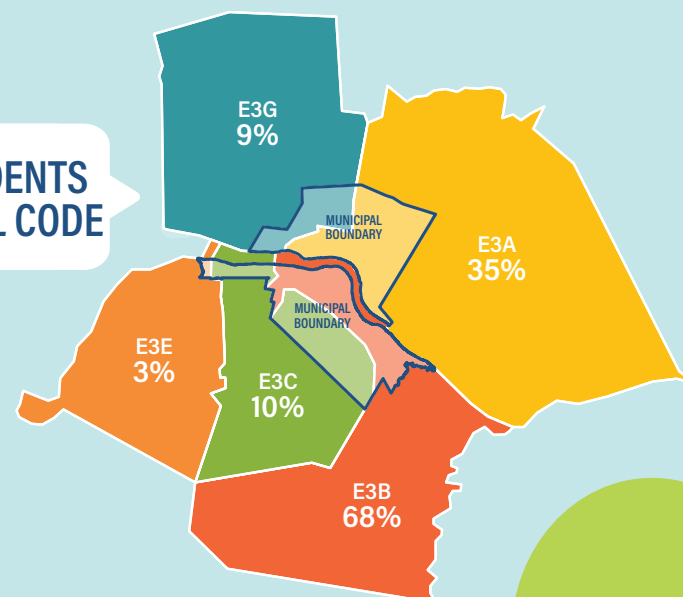
TOP PARK BARRIERS



FULLY ENJOY



RESPONDENTS BY POSTAL CODE



The forests in these two lovely parks are treasures we need to nurture and protect.

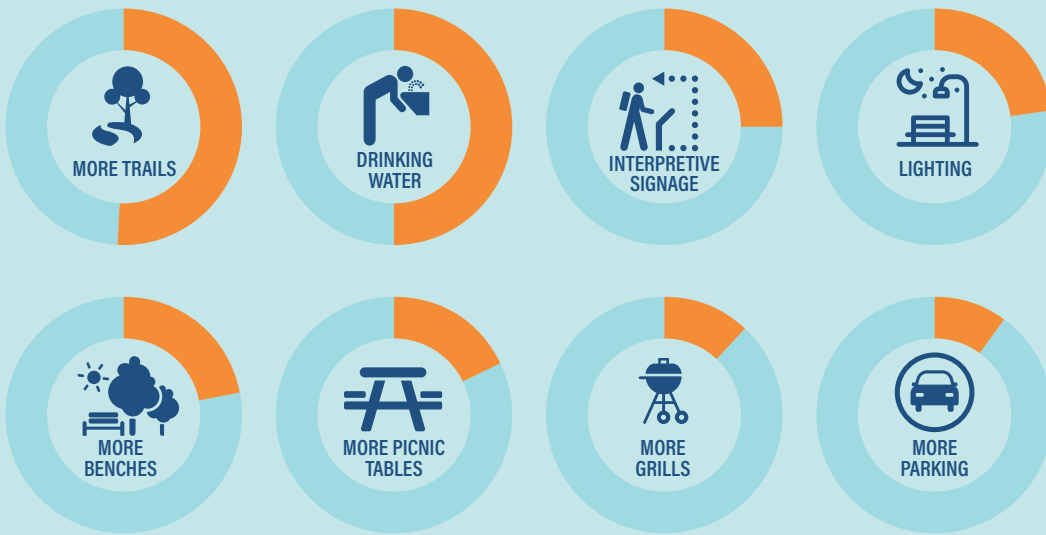
705
RESPONSES
TO DATE

SURVEY FINDINGS

Fredericton

www.fredericton.ca/parkplans

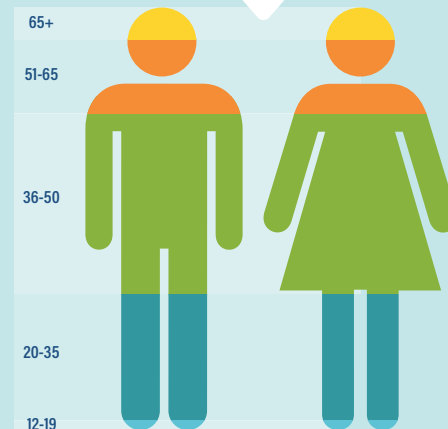
TOP PARK DESIRES



WAYFINDING
WORK WITH RVC TO MANAGE MTB TRAILS
ODELL TRAIL MAINTENANCE
PREVENT USE OF ODELL'S UNOFFICIAL MTB TRAILS
MAINTAIN WILDNESS
ADD ANOTHER DISC GOLF COURSE OUTSIDE OF ODELL
LIMIT FUTURE DEVELOPMENT IN ODELL

ADDITIONAL IMPROVEMENTS

RESPONDENTS BY AGE



My family of four love both parks, and one of our favourite family activities is walking our dog on the nature trails.



I can't overemphasize the importance of these park master plans, as our parks are one of the things that make Fredericton a great place to live and visit.

SAFETY CONCERNS

ONLY FEEL SAFE WITH OTHERS OR A DOG
PAST INCIDENTS
SECLUSION
POOR LIGHTING AT NIGHT
INTIMIDATING PEOPLE

Really love both locations. Great to have as a part of our city and allows you to connect with nature.

705
RESPONSES
TO DATE

SURVEY FINDINGS

Fredericton

www.fredericton.ca/parkplans

ACTIVITIES

Odell Park:

- Walking - 33
- Picnic & Lunch - 14
- Dog - 10
- Playground - 7
- Relaxing - 6
- Running - 5
- Nature - 3
- School - 2
- Cycling - 1

Killarney Lake Park:

- Beach - 23
- Walking - 15
- Dog - 5
- Picnic & Lunch - 3
- Cycling - 3
- Relax - 2
- Fishing - 2
- Paddling - 1
- Hiking - 1
- Lodge meeting - 1
- XC Ski training - 1
- Botanic garden - 1
- Disc golf - 1
- Social - 1
- Photography - 1
- Geocache - 1
- Commuting - 1

ENTRANCE

Odell Park:

- Rookwood - 40
- Botanic garden - 5
- Hanwell - 3
- Bottom of Smythe - 1

Killarney Lake Park:

- Beach - 29
- Lodge - 8

LENGTH OF VISIT

Odell Park:

- 30 - 45 mins
- 45 mins - 1 hr
- 1.5 hrs
- 2 hrs
- 2 - 3 hrs

Killarney Lake Park:

- 1 - 2 hrs
- 3 hrs

FREQUENCY OF USE

Odell Park:

- Every day
- 2 - 3 times a week
- 1 - 2 times a week
- Once a week
- Few times a month
- Once a month

Killarney Lake Park:

- Multiple times a day
- 5 - 7 times/week
- 3 - 4 times/week
- 1 - 2 times/week
- Once a week
- Once a month
- Every summer
- 3 times/year

NATURALISTS MEETING

Odell Park

- Ecological values a top priority
- Conservation of old-growth forest essential
- Habitat for great horned owls, flying squirrels, salamanders, and bats among other wildlife.
- More interpretive signage, programming, and promotions of unique ecology in Odell.
- Consider ecological impacts (watercourses, compaction, wildlife, biota, etc.) and take inventories of routes before developing recreation activities.
- Importance of getting people into the park in a sustainable way
- Many institutions conduct research in Odell Park
- Single track mountain biking can be compatible with ecological values. Approval should come from a single authority with ecological knowledge and trail-building should be vetted.
- Not in favour of community gardens in Odell
- Consider naturalizing under-used, cleared land

Killarney Lake Park

- Killarney is more of a recreational park than Odell.
- It is home to less old-growth forest, but there are still some significant stands.
- Noteworthy for its glacial geology: esker, moraine, and acidic soils.
- Concern about water quality issues at the lake

ABILITY NB

- Paved trails are preferred, but it is better to have more crusher dust trails than fewer paved trails.
- 1/2 km trail loops work really well
- Rubberized surfaces at playgrounds are not desirable.
- Accessible features at playgrounds are desirable.
- More accessible picnic tables at both parks are needed.
- Use universal design whenever possible
- Pay close attention to transitions (i.e., parking lot to trail)
- Paving units can cause a lot of falls if the depressions in the units are greater than 1/4".
- Where possible, any new trails should have gradual slopes (no more than 1:12). A winding trail is acceptable to lower the slope.
- Maximum of 50m from parking to the front door is the target.
- The trails which are accessible should be clearly identified with the universal symbol of access
- There is no accessible trail at Killarney beach parking lot.
- Ability NB has resources to review and test design concepts as well as built infrastructure, and are happy to participate.

AGE FRIENDLY ADVISORY COMMITTEE

Accessibility:

- More benches are needed in both parks.
- Washroom location at Odell is fairly accessible, but the doors are very heavy.
- Gravel is more difficult than pavement for people with mobility challenges.
- Drainage issues, ruts, downed trees, ice reduce accessibility.
- Trail grade is important.
- Suggest adding more lighting to trails in Killarney; however, like the 'preserve' feel of Odell and its natural darkness.
- The wide, flat trail around Killarney Lake feels safest because it is easier to see cyclists coming and there is no risk of getting lost.

Wayfinding:

- Place signage at all park access points.
- Connect/raise awareness of different parts of Odell through signage
- Maps showing 'you are here' at intersections deeper in the parks.

Parking:

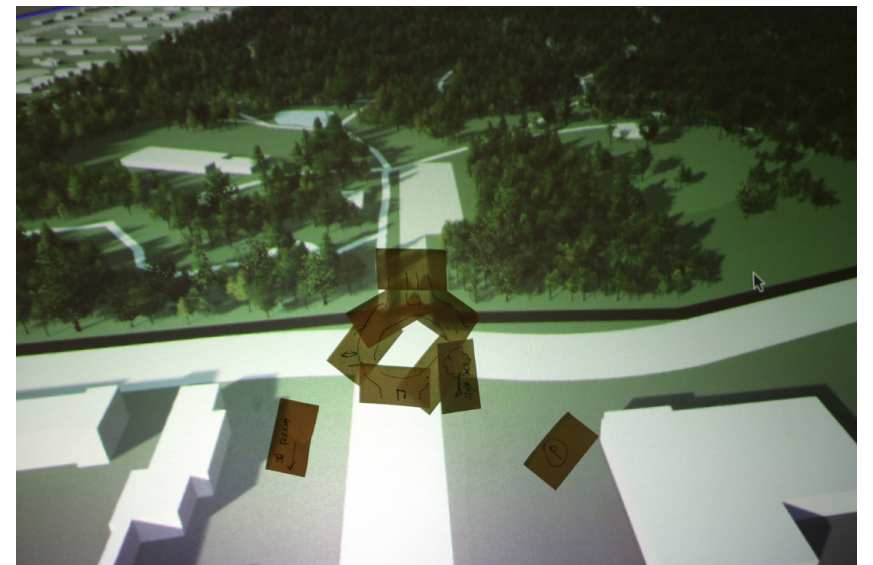
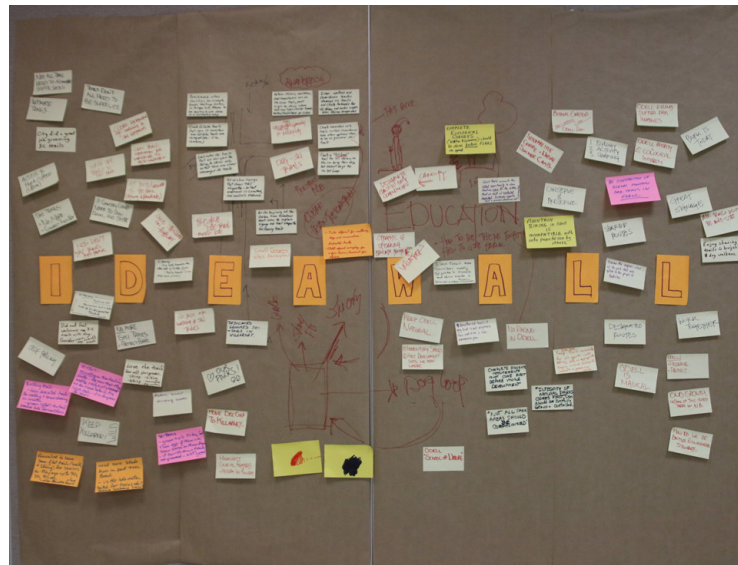
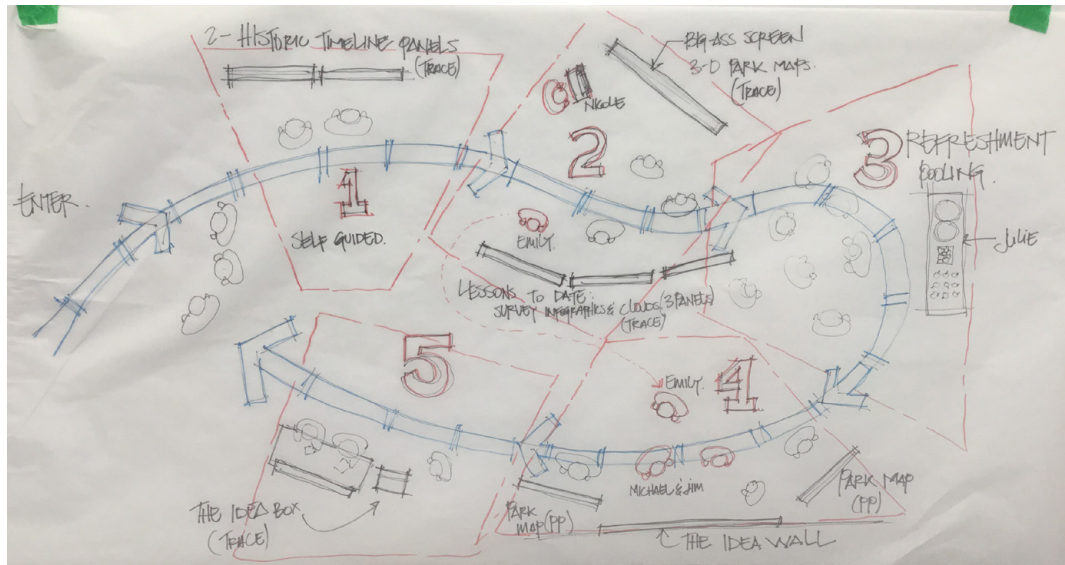
- The space available for parking is sufficient at both parks.
- Suggest paving and adding lines for parking spaces at Killarney beach lot.
- Painted lines in Odell could be designed to more efficiently use space, have better traffic flow.

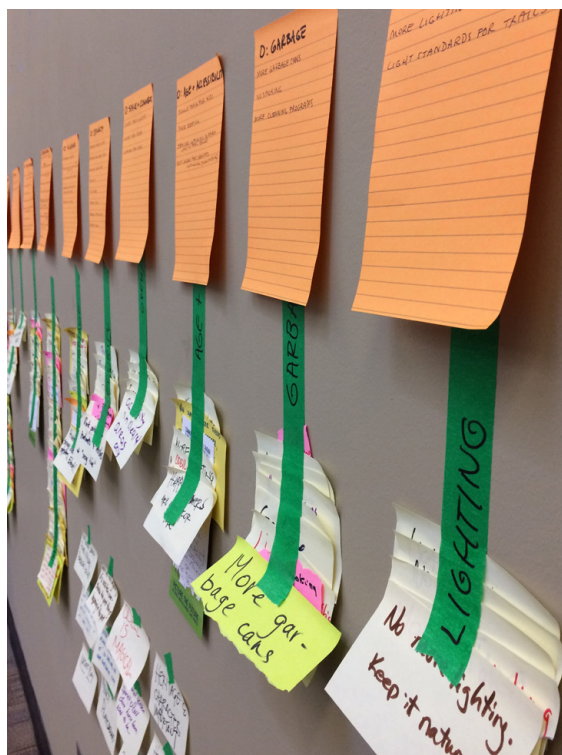
Uses:

- Walking, dog walking, picnicking, visiting with family and friends.
- Using open spaces in Odell for yoga and tai chi classes
- Would like to see more historical and environmental education opportunities

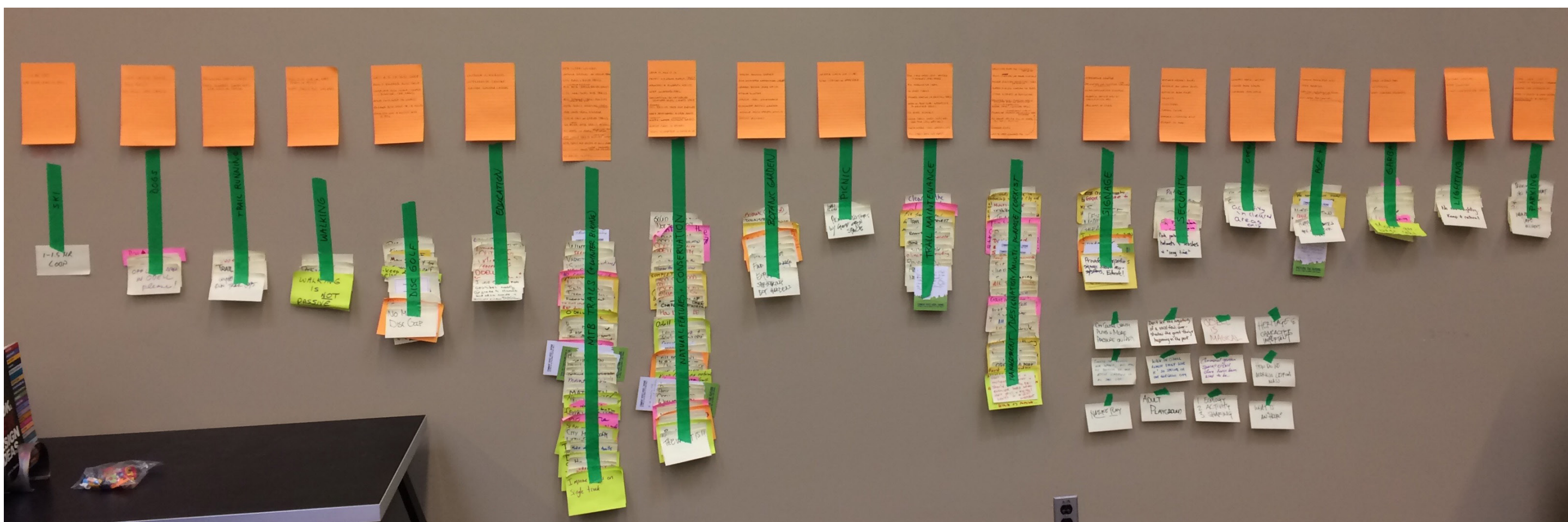
ST. MARY'S FIRST NATION

- Would like to see a Maliseet component, as the parks are part of their unceded territory.
- Interpretive signage (e.g., traditional uses of different tree/plants for medicines, basket weaving, etc.; incorporating symbols or art)
- Language (adding Maliseet translations to signage)
- Trail names that use Maliseet words/names
- Andrea Bear Nicholas - history
- Amalda Pearly - culture and language
- Highlight indigenous trees and plants in the park.
- Educational opportunities related to forest ecology, how the whole system works.





ODELL PARK SUMMARY OF IDEAS



TRAIL RUNNING

- Have a couple of running trail loops
- Trail runners sometimes use single track trails



WALKING

- Walking is critical
- Soft trails for walkers



SKIING

- Used to have skiing in Odell
- 1 - 1.5 hr loop



DISC GOLF

- Get rid of disc golf
- Don't expand disc golf in park
- Complete disc golf course (e.g., signage, tee pads)
- Move disc golf to Wilmot Park
- Expand disc golf to 18 holes
- Move disc golf to another area in park



MOUNTAIN BIKING

- MTB scares walkers
- Improve bridges on single track
- City plans and builds trails
- Improve existing MTB trails
- City sanction MTB trails
- RVC manage trails for the city
- Work with RVC, FTR
- MTB trails harming Odell's environment
- Add MTB trail signage
- Cycle only on gravel trails
- No new MTB trails
- No MTB, rehabilitate trails to natural state
- Need single track in accessible (south-side) location
- MTB trails for a variety of skill levels
- Fat biking compatibility with snowshoers/winter walkers
- No racing in Odell



EDUCATION

- Outdoor classroom
- Interpretive centre
- Nature summer camps



DOG WALKING

- Off-leash area
- Dog bags
- No dogs off-leash



TRAIL MAINTENANCE

- Pave main trails (esp. Smythe → Hanwell thru park)
- Fix Arboretum trail
- Improve botanic garden trail maintenance
- Address erosion of existing trails
- No new trails
- Work with bike clubs and naturalists to maintain trails
- No more paved trails
- Close trails when conditions are poor (e.g., wet soil)
- Sustainable trail construction
- Pull debris back into the forest

LIGHTING

- No more lighting
- More lighting
- Develop light standards for trails

PARKING AND TRAFFIC

- Traffic circle/light at the corner of Rookwood and Waggoners
- Increase size of parking lot
- Speed of traffic at Odell entrance an issue
- Parking for skiing at Woodlot

SIGNAGE

- Interpretive signage
- Designated use signage
- Signage showing trail difficulty
- Upgrade or remove species identification keys
- New map of park

PICNIC AREA

- Intense lunch use (1hr)
- Picnic stations with open space

WASTE

- More garbage cans
- No smoking
- More clean-up programs

BOTANIC GARDEN

- Shrink botanic garden
- Find sustainable garden model (e.g., with university)
- More native plants
- Improve signage
- Eliminate botanic garden
- Improve plant variety/novelty
- Define boundary

AGE AND ACCESSIBILITY

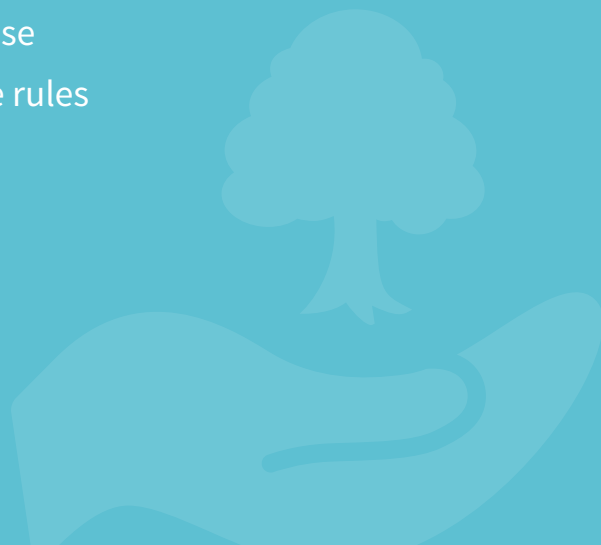
- Single track for kids
- More seating
- Seniors walking in park want to feel secure
- Flat area for seniors (walking, snowshoeing)

SPACE AND CONNECTION

- Connect Odell and Wilmot Parks
- Linked park spaces
- Connected open space

TRAIL MANAGEMENT AND SHARING

- Designated routes for snowshoeing and fat biking
- Balance ecosystem protection and public recreation
- Agreed-to access corridor for bikes
- Dedicated MTB and running trails
- Designated zones for specific uses
- Multi-use scheduling (e.g., biker days/walker day)
- Formalize rules, management plan for shared use, trail etiquette (e.g., look to IMBA standards)
- All groups can use all of park, all trails multi-use
- Enforce rules



CONSERVATION

- Leave park how it is
- Protect old growth forest (trees and plants)
- Important to migratory species
- Keep wilderness feel
- Restoration of cleared/developed spaces
- Address soil erosion, tree root exposure
- Keep development to open areas
- Conduct winter and summer ecological inventories
- Invasive plants in ravines
- ‘Extreme’ sports incompatible with preservation

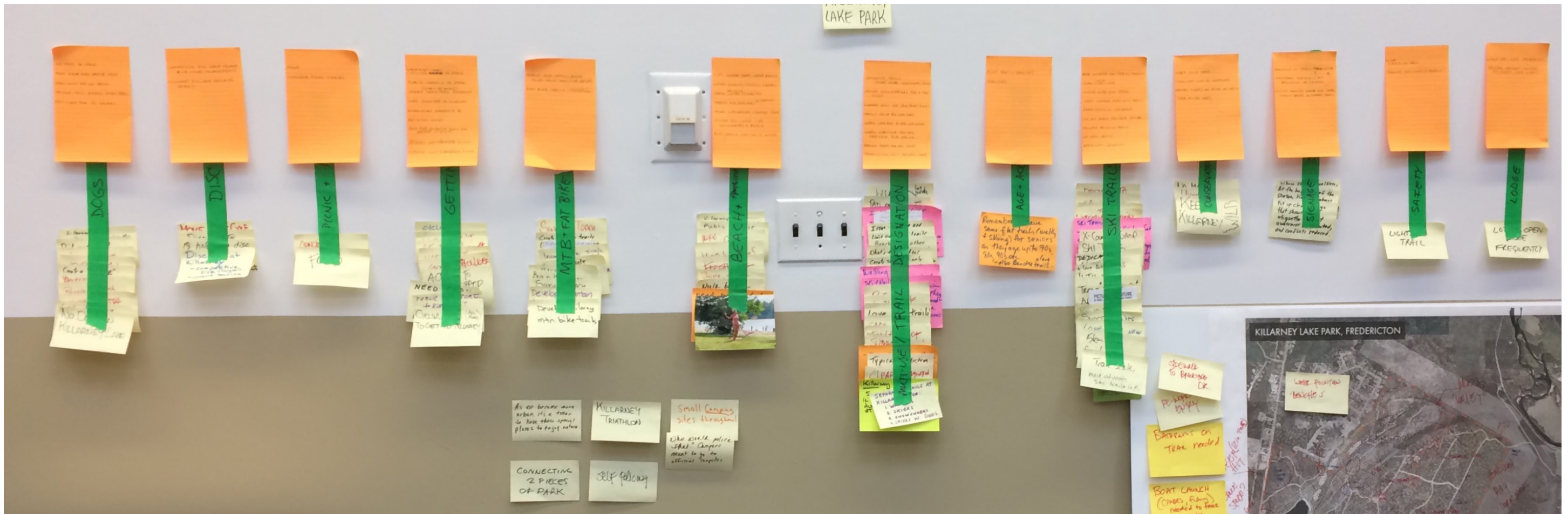
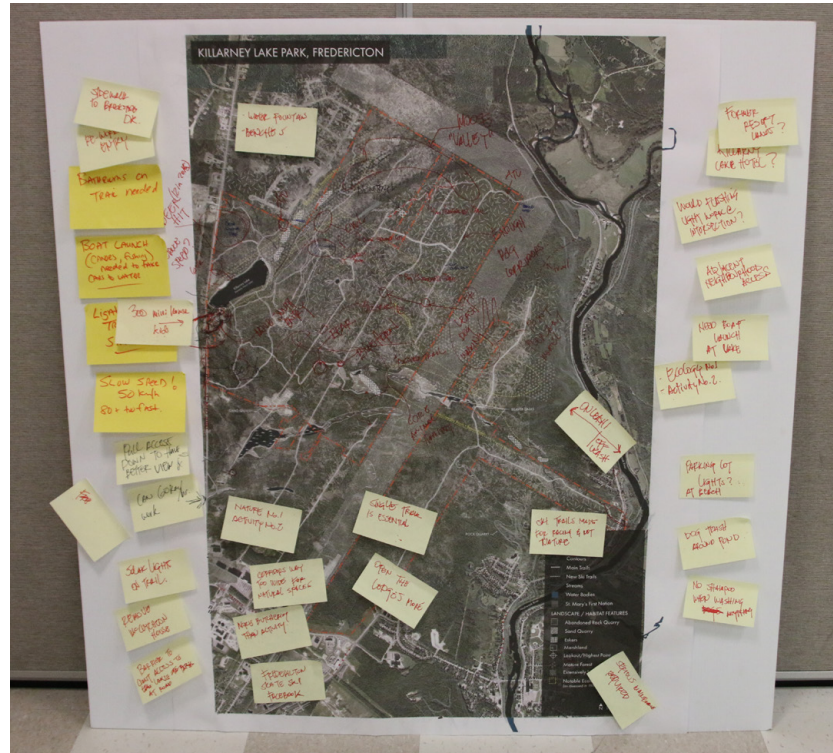
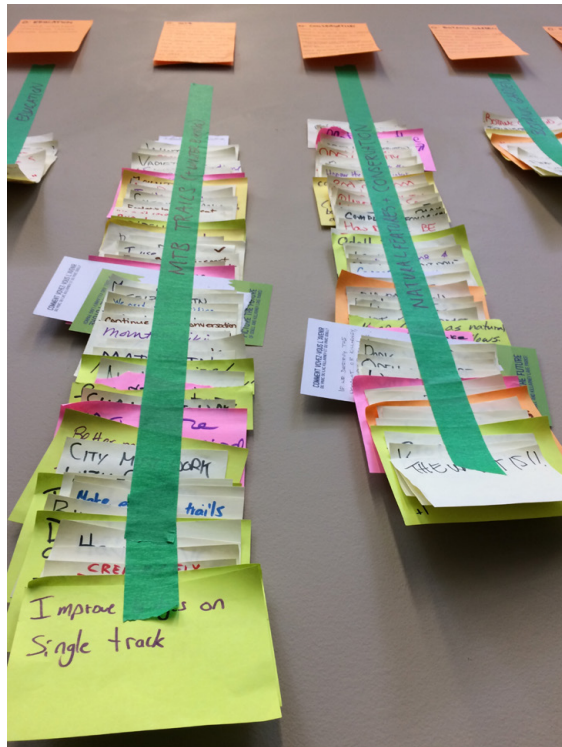


SAFETY

- Enforce helmet rules
- Enforce dog leash rules
- Enforce bike rules
- Sight trees
- Safety phone
- Enforce littering rules
- Enforce open fire rules



KILLARNEY LAKE PARK SUMMARY OF IDEAS



DISC GOLF

- Competitive disc golf course (18 hole) for tournaments
- Killarney disc golf could replace Odell's course



SKIING

- More intimate ski trails with canopy
- Classic-only ski loops
- Smooth, wide ski paths
- Needs harder, more fun trails
- Groom trails on weekends
- Not all trails for skate skiing
- Connect existing trails
- No new trails
- Wostawea groom trails



DOG WALKING AND DOG SWIMMING

- No dogs in lake
- Dogs have own area at lake
- People-only beach area
- Pet loop for XC skiers



MOUNTAIN AND FAT BIKING

- Develop MTB trails, route away from sensitive areas
- Fat bike trails (snowshoe if compatible)



BEACH AREA & AMENITIES

- More shade trees near beach
- Water quality/testing communications
- Fresh drinking water source/tap
- Fresh air shower
- More washrooms
- Change rooms
- Boat launch, get cars to water
- Entire hill and lake side a designated beach



LIGHTING

- Solar lights on trail
- Parking lot lights at beach



PICNIC AREA

- Food availability
- Concrete picnic tables



PARKING AND TRAFFIC

- Want an active transportation route to park
- Public transit to park
- Reduce speed limit near park entrance (80 km/hr too fast, 50 would be better)
- Good shoulder on highway
- Sidewalks on Brookside Dr.
- Re-work park entry, move down for improved visibility
- Adjacent neighbourhood access
- Flashing light at entrance to the park



SIGNAGE

- Signage with trail etiquette, showing where different users should travel on shared trails



AGE AND ACCESSIBILITY

- Flat trails (walk, ski)
- Benches



TRAIL MANAGEMENT AND SHARING

- Separate trails for walkers, skiers, snowshoers, dogs
- Summer trail use (run/bike/hike)
- Family use of big corridors
- Widen corridors to add room for walkers
- Management example: Nordic heritage Centre, Presque Isle, Maine
- Design park for all users
- Pedestrians only around the lake
- Volunteers explain trail etiquette at beginning of the season



CONSERVATION

- Keep wilderness feel
- Highlight glacial features
- Protect forest, no more ski trails
- Deer winter yard, other important habitats



LODGE

- Lodge open more frequently
- Former resort lands/Killarney Lake Hotel



Fredericton 