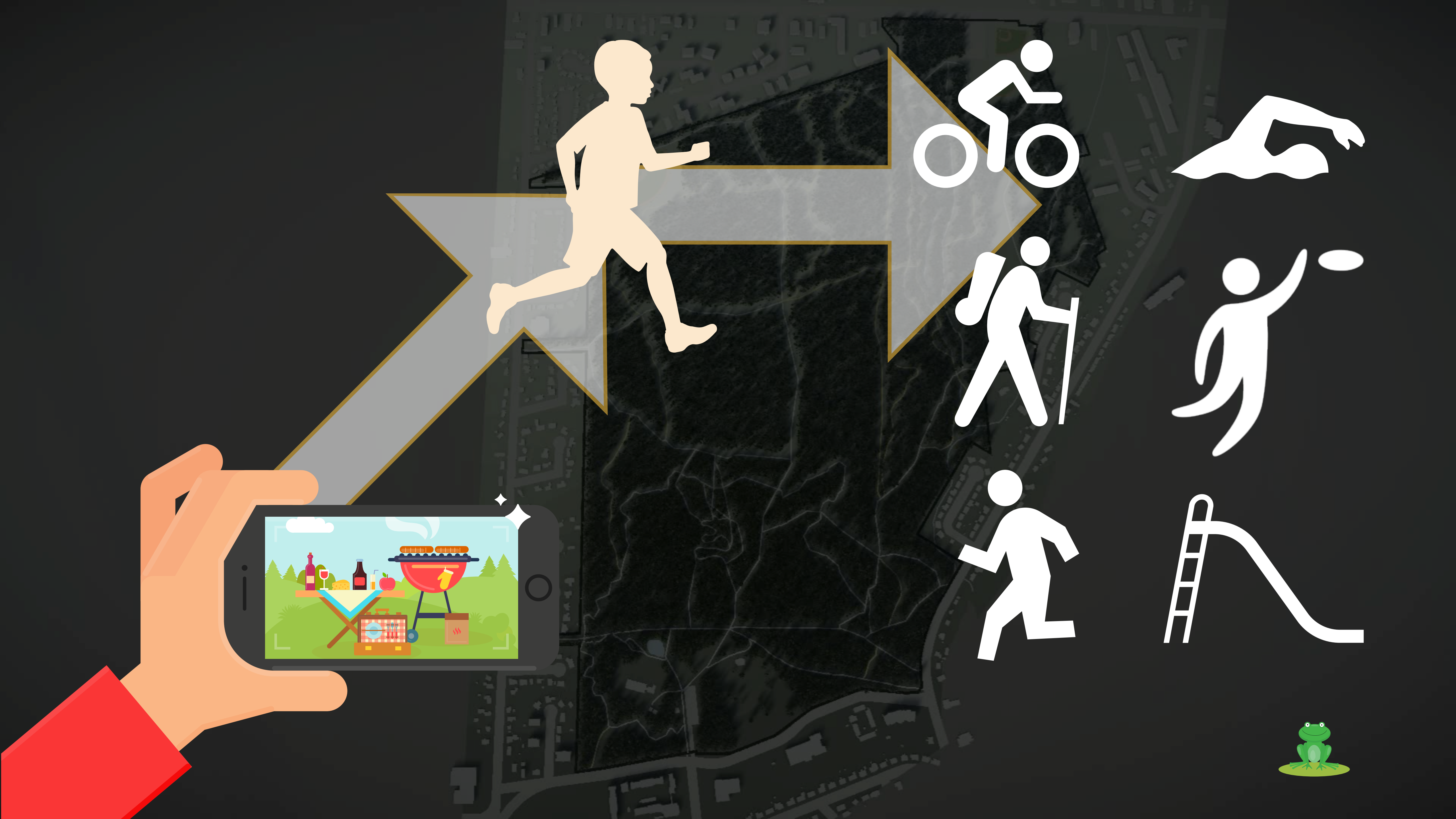


PICTURE THE FUTURE OF ODELL AND KILLARNEY LAKE PARKS!



- 
1. sustainability
 2. activity
 3. sharing





SHAPE THE FUTURE

ODELL AND KILLARNEY LAKE PARKS!



PARK IMPROVEMENT PLANS |
PLANS D'AMÉLIORATION DES
PARCS

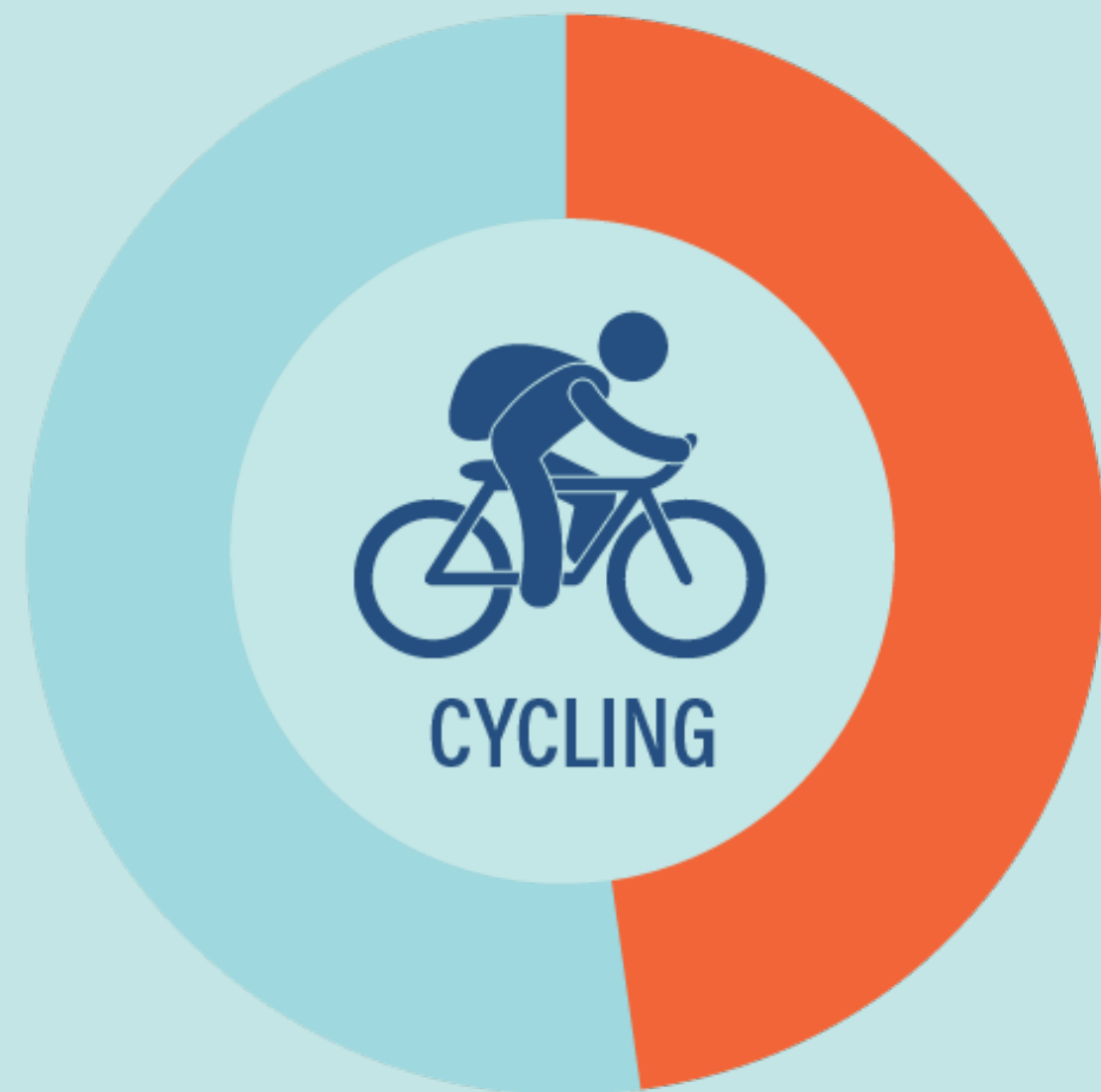
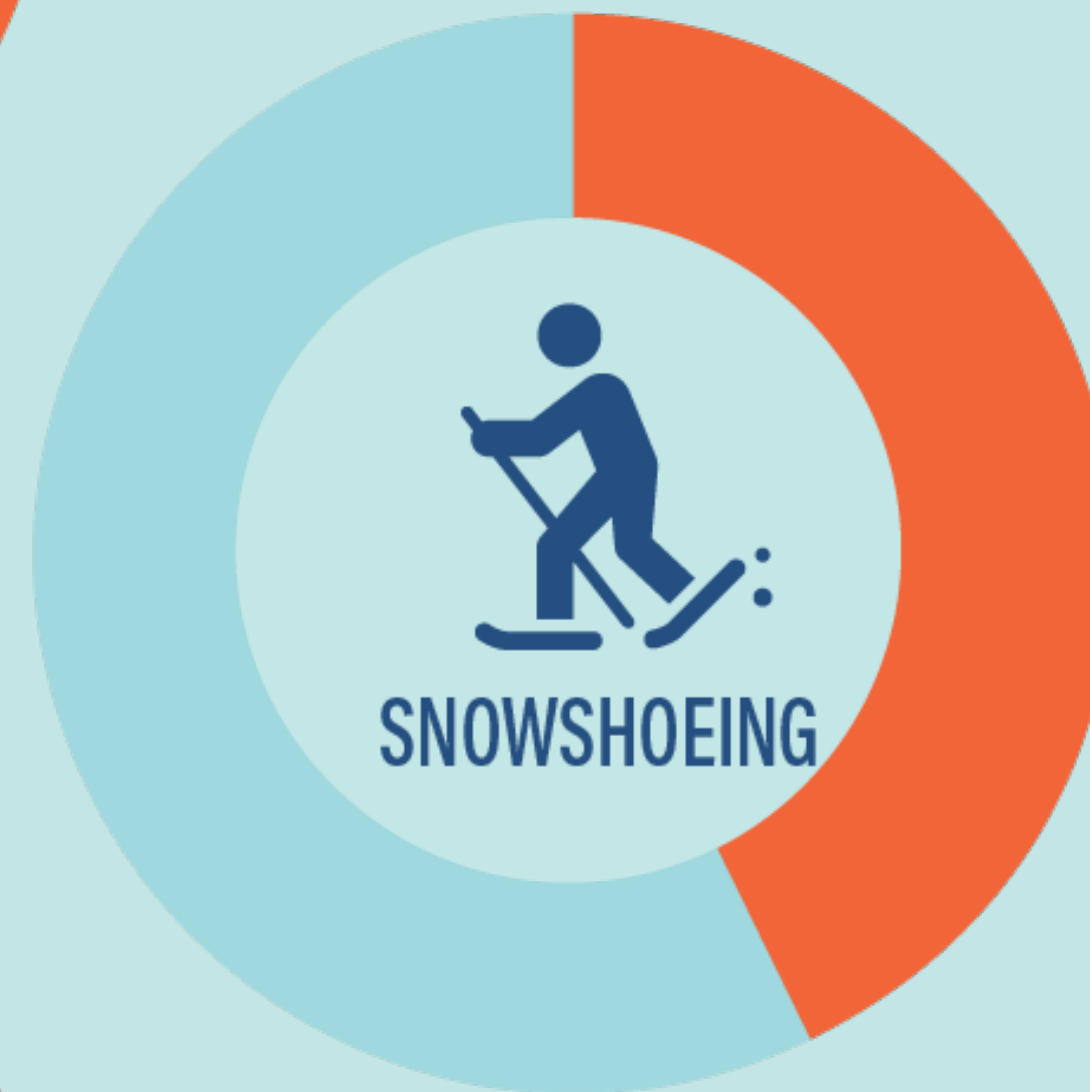
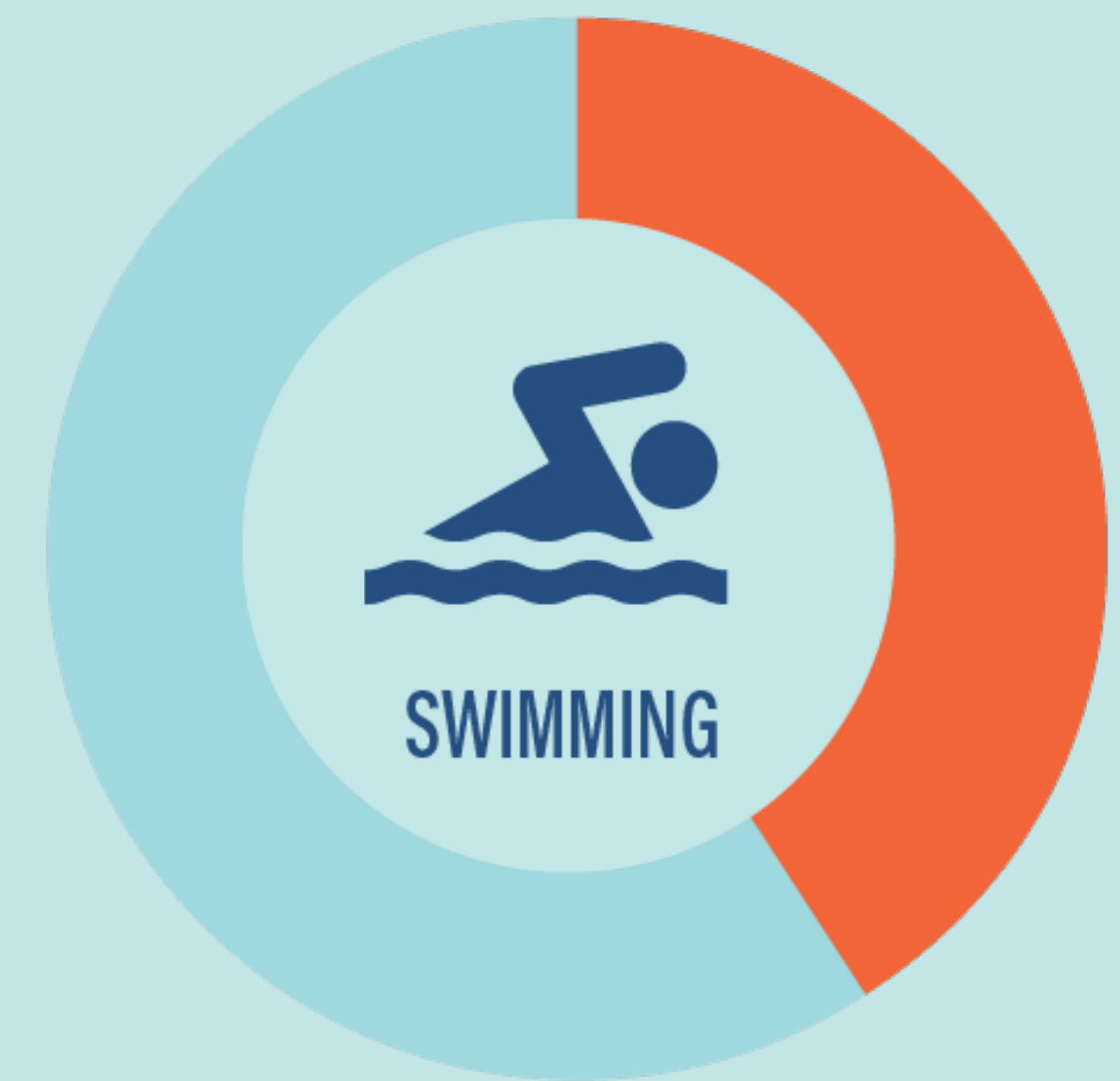
Parcs Odell & Killarney Parks

ENGLISH FRANÇAIS

CONSULTATION SUMMARY

July 2017

TOP ACTIVITIES



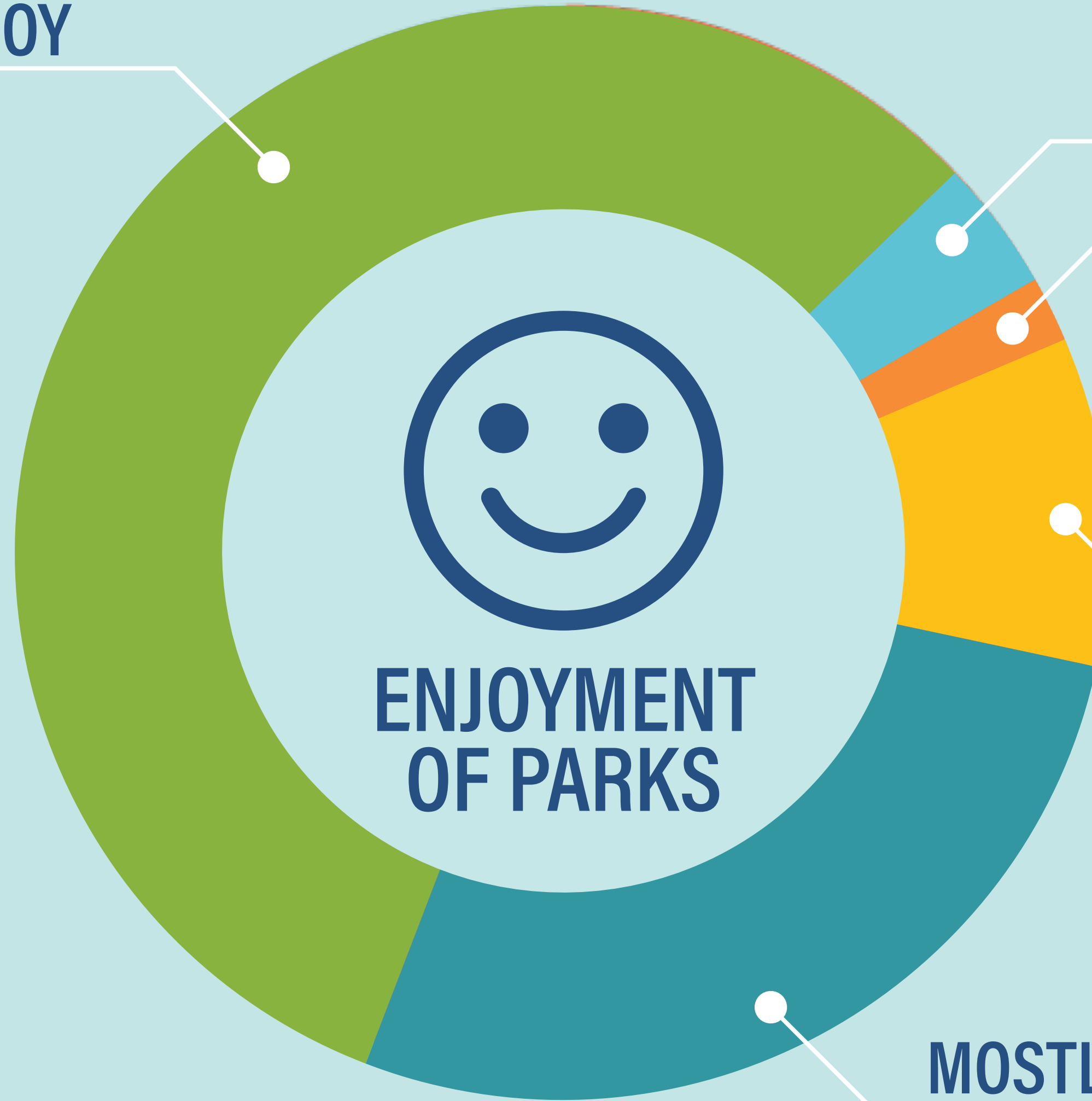
FULLY ENJOY

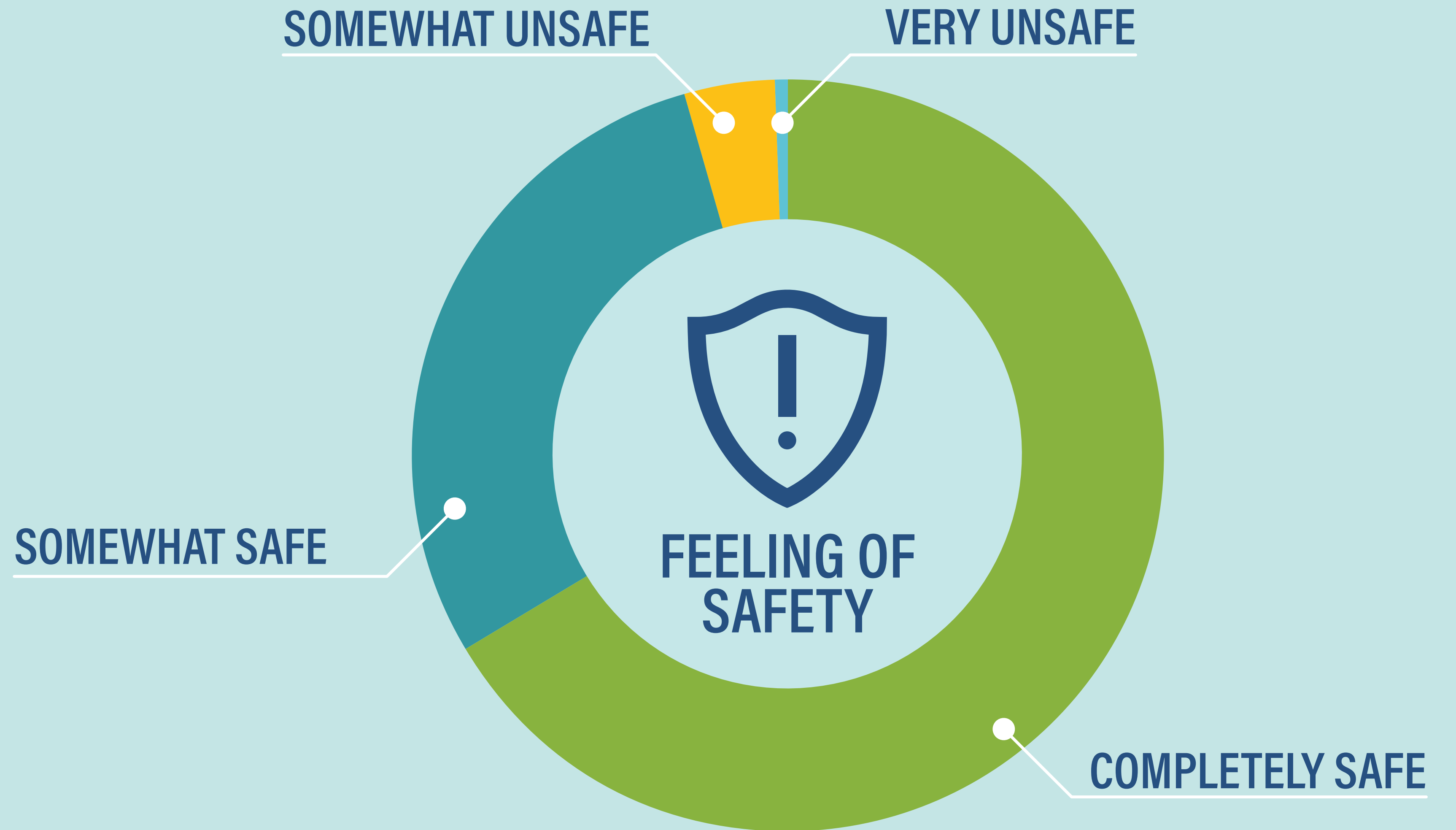
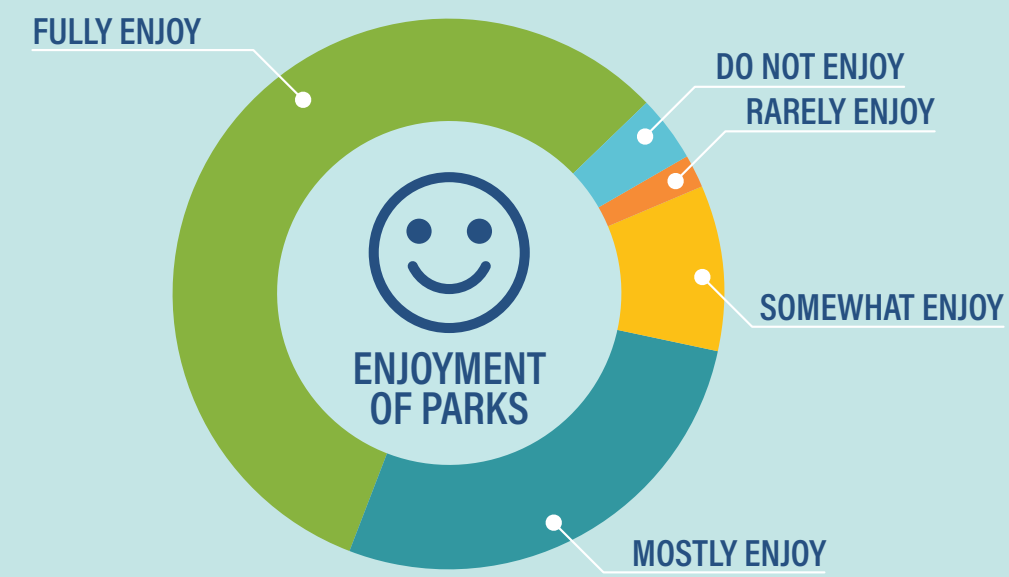
**DO NOT ENJOY
RARELY ENJOY**

SOMEWHAT ENJOY

MOSTLY ENJOY

**ENJOYMENT
OF PARKS**



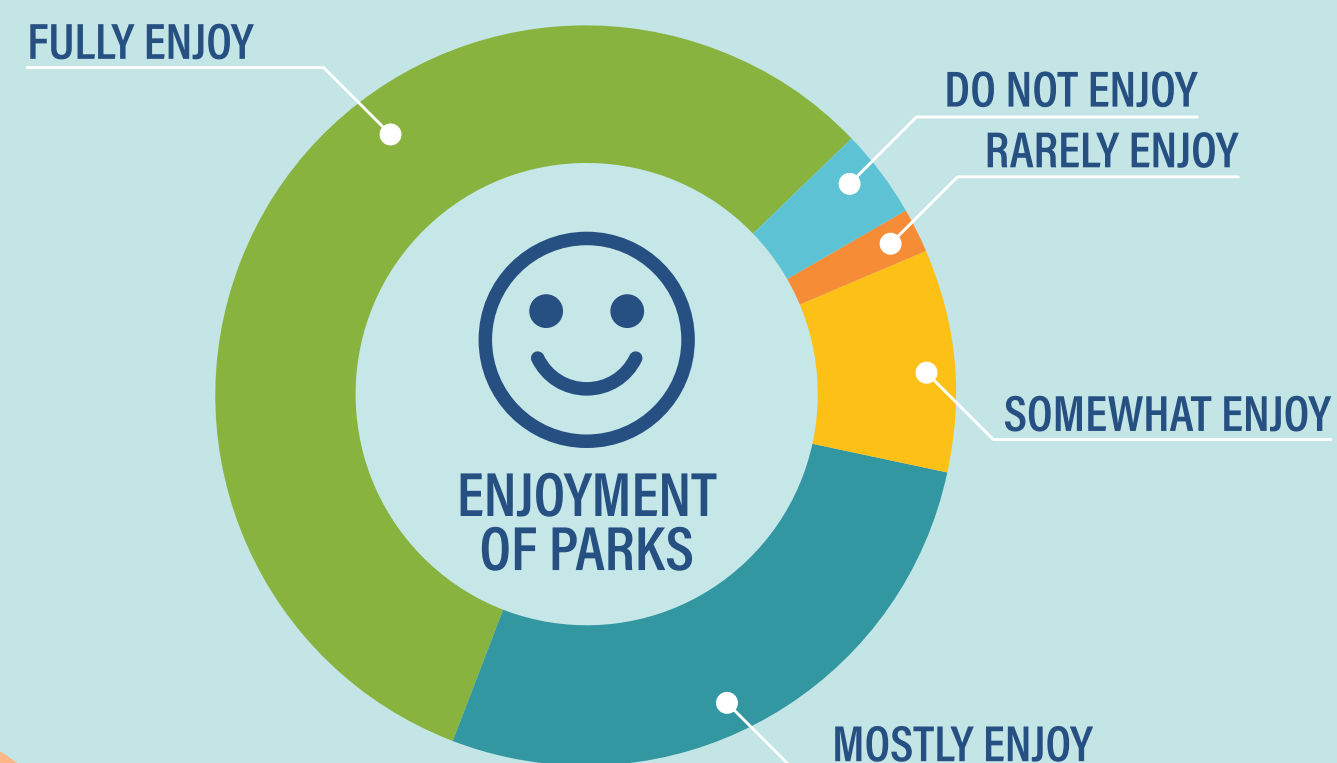


My family of four love both parks, and one of our favourite family activities is walking our dog on the nature trails.

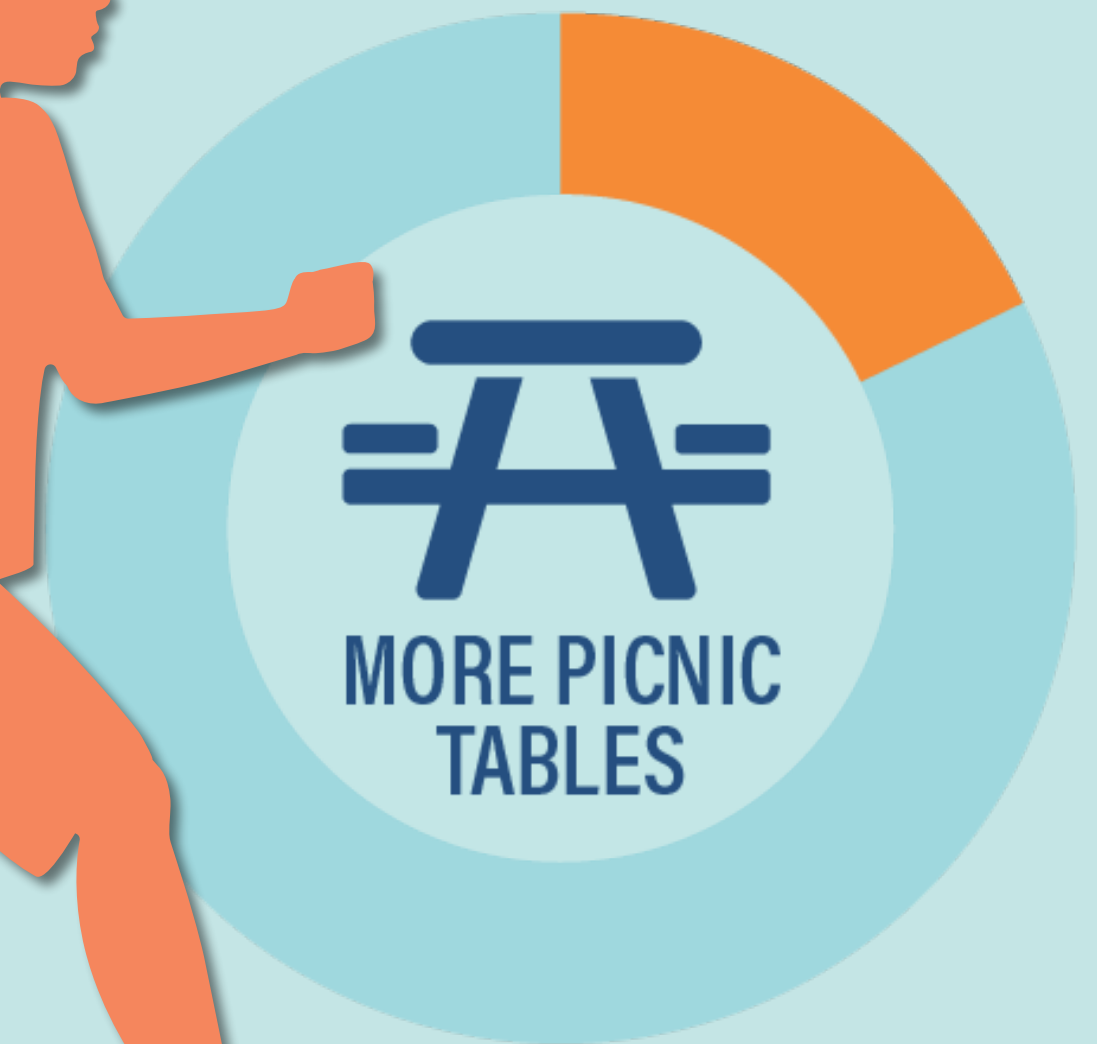
Love that we can access the wilderness in the middle of the city!

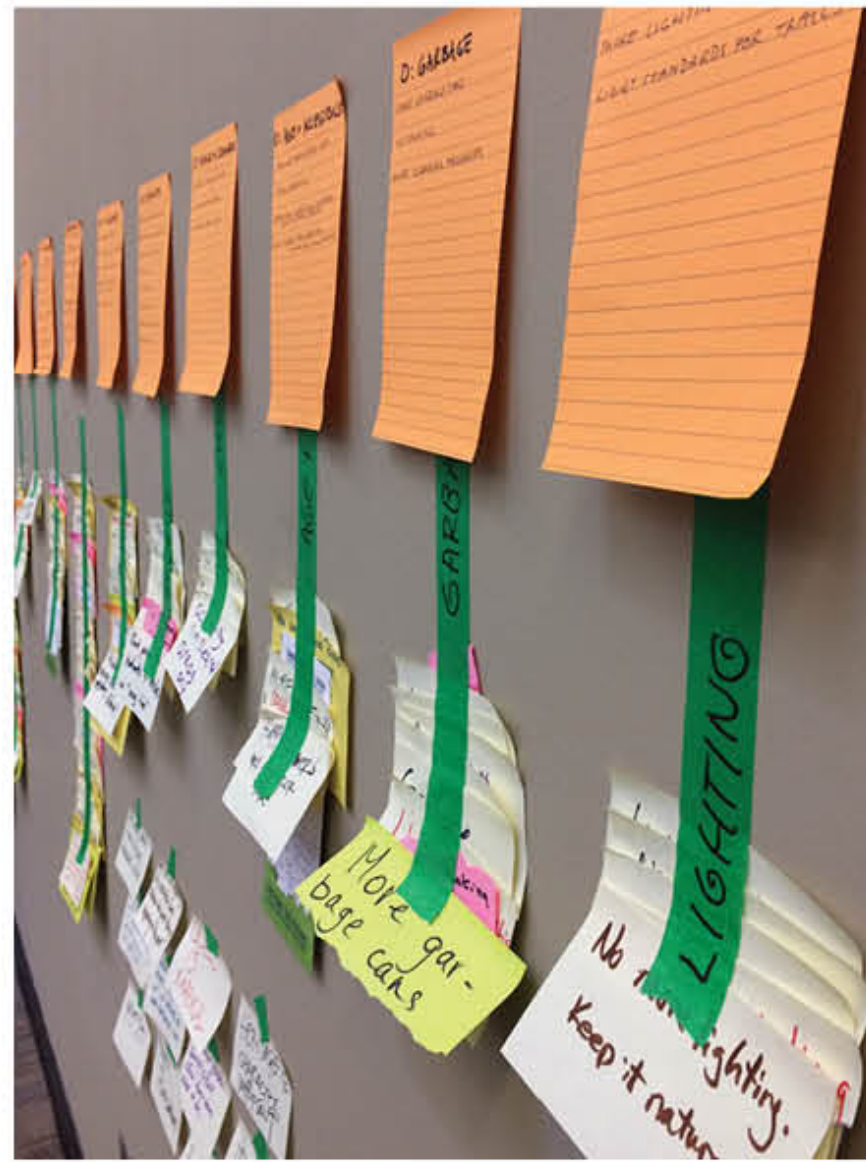
Really love both locations. Great to have as a part of our city and allows you to connect with nature.

The forests in these two lovely parks are treasures we need to nurture and protect.

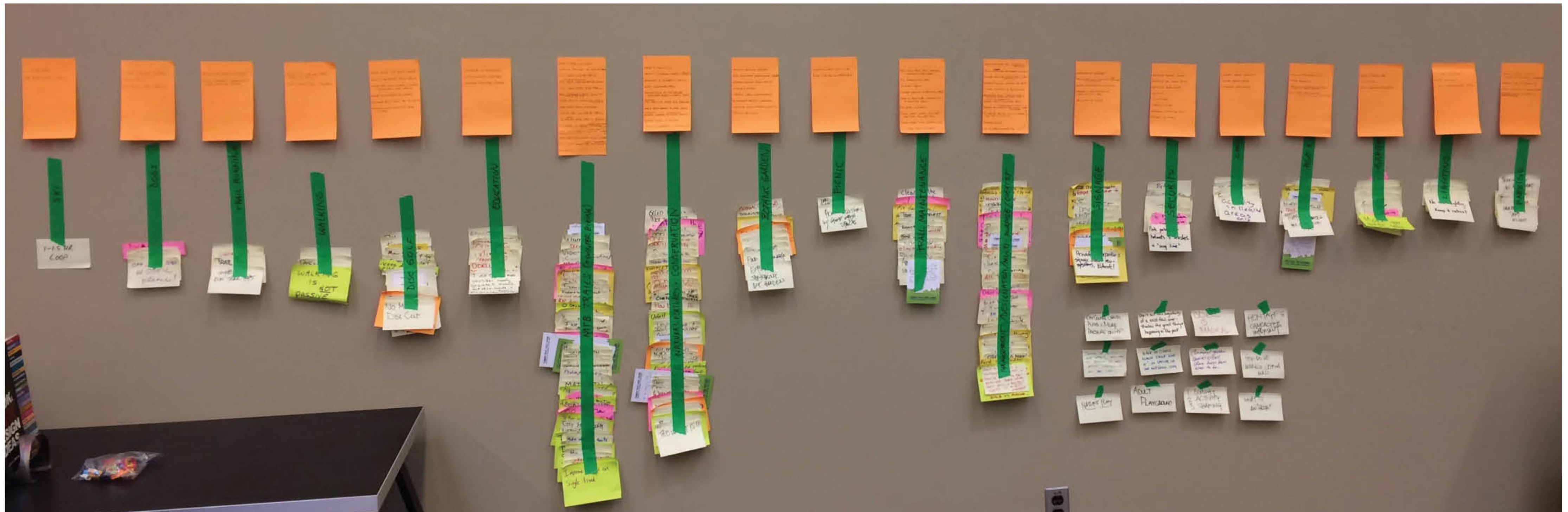


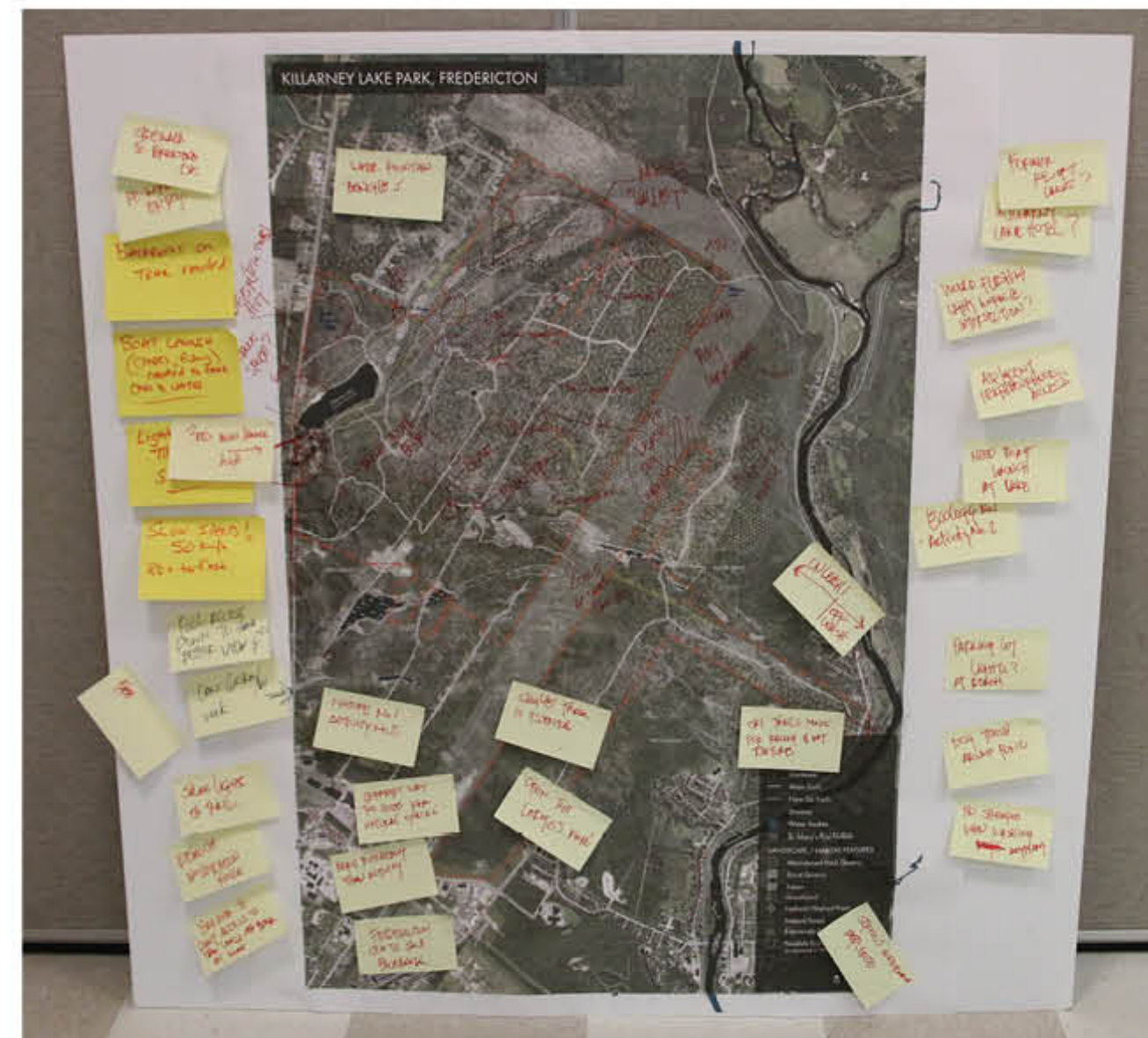
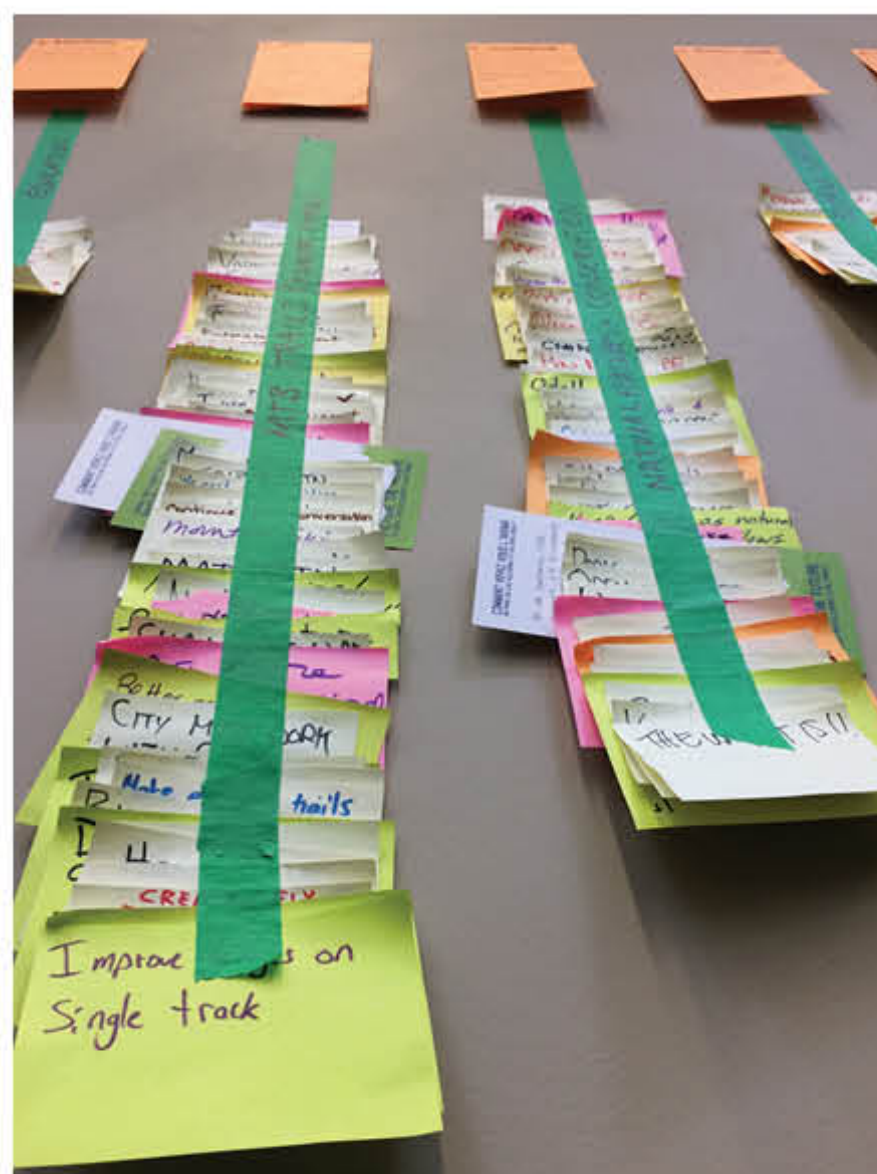
TOP PARK DESIRES



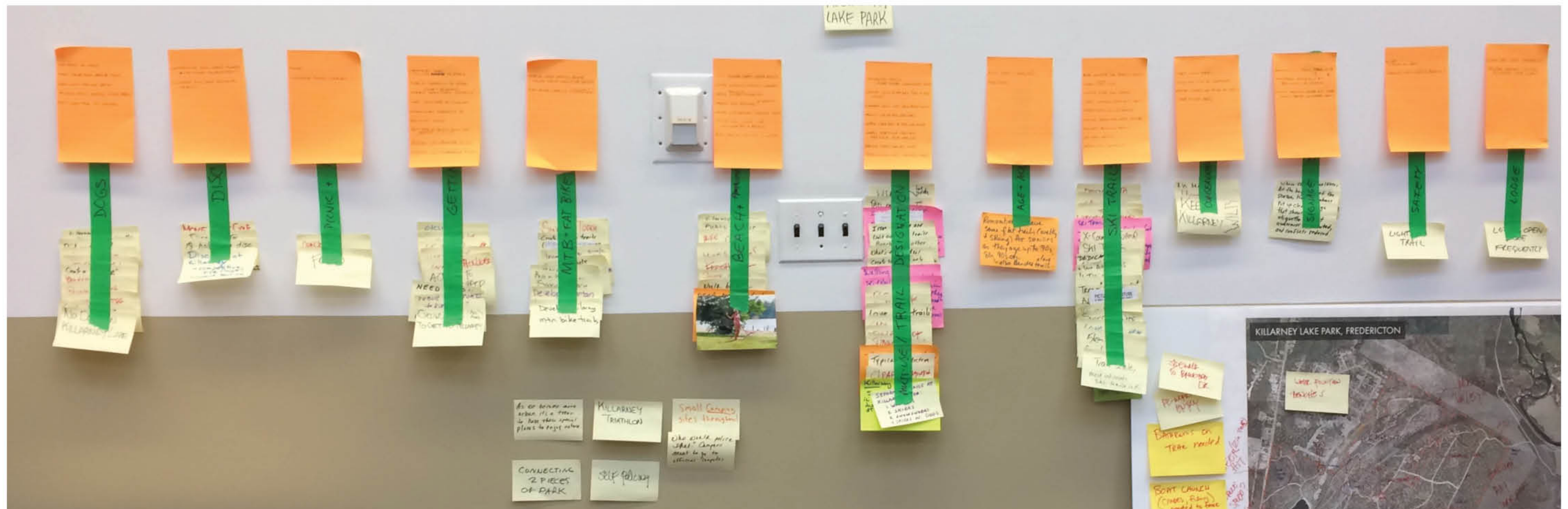


ODELL PARK SUMMARY OF IDEAS





KILLARNEY LAKE PARK SUMMARY OF IDEAS



TRAIL RUNNING

- Have a couple of running trail loops
- Trail runners sometimes use single track trails



WALKING

- Walking is critical
- Soft trails for walkers



SKIING

- Used to have skiing in Odell
- 1 - 1.5 hr loop



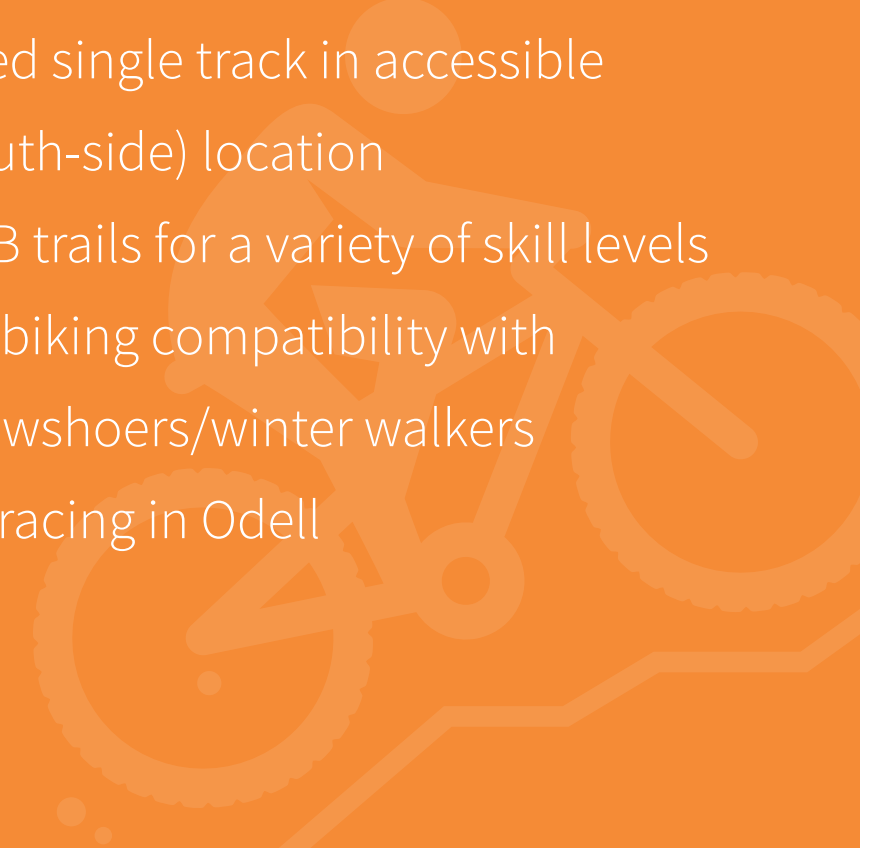
DISC GOLF

- Get rid of disc golf
- Don't expand disc golf in park
- Complete disc golf course (e.g., signage, tee pads)
- Move disc golf to Wilmot Park
- Expand disc golf to 18 holes
- Move disc golf to another area in park



MOUNTAIN BIKING

- MTB scares walkers
- Improve bridges on single track
- City plans and builds trails
- Improve existing MTB trails
- City sanction MTB trails
- RVC manage trails for the city
- Work with RVC, FTR
- MTB trails harming Odell's environment
- Add MTB trail signage
- Cycle only on gravel trails
- No new MTB trails
- No MTB, rehabilitate trails to natural state
- Need single track in accessible (south-side) location
- MTB trails for a variety of skill levels
- Fat biking compatibility with snowshoers/winter walkers
- No racing in Odell



EDUCATION

- Outdoor classroom
- Interpretive centre
- Nature summer camps



DOG WALKING

- Off-leash area
- Dog bags
- No dogs off-leash



TRAIL MAINTENANCE

- Pave main trails (esp. Smythe —> Hanwell thru park)
- Fix Arboretum trail
- Improve botanic garden trail maintenance
- Address erosion of existing trails
- No new trails
- Work with bike clubs and naturalists to maintain trails
- No more paved trails
- Close trails when conditions are poor (e.g., wet soil)
- Sustainable trail construction
- Pull debris back into the forest

LIGHTING

- No more lighting
- More lighting
- Develop light standards for trails

PARKING AND TRAFFIC

- Traffic circle/light at the corner of Rookwood and Waggoners
- Increase size of parking lot
- Speed of traffic at Odell entrance an issue
- Parking for skiing at Woodlot

SIGNAGE

- Interpretive signage
- Designated use signage
- Signage showing trail difficulty
- Upgrade or remove species identification keys
- New map of park

PICNIC AREA

- Intense lunch use (1hr)
- Picnic stations with open space

WASTE

- More garbage cans
- No smoking
- More clean-up programs

BOTANIC GARDEN

- Shrink botanic garden
- Find sustainable garden model (e.g., with university)
- More native plants
- Improve signage
- Eliminate botanic garden
- Improve plant variety/novelty
- Define boundary

AGE AND ACCESSIBILITY

- Single track for kids
- More seating
- Seniors walking in park want to feel secure
- Flat area for seniors (walking, snowshoeing)

SPACE AND CONNECTION

- Connect Odell and Wilmot Parks
- Linked park spaces
- Connected open space

TRAIL MANAGEMENT AND SHARING

- Designated routes for snowshoeing and fat biking
- Balance ecosystem protection and public recreation
- Agreed-to access corridor for bikes
- Dedicated MTB and running trails
- Designated zones for specific uses
- Multi-use scheduling (e.g., biker days/walker day)
- Formalize rules, management plan for shared use, trail etiquette (e.g., look to IMBA standards)
- All groups can use all of park, all trails multi-use
- Enforce rules



CONSERVATION

- Leave park how it is
- Protect old growth forest (trees and plants)
- Important to migratory species
- Keep wilderness feel
- Restoration of cleared/developed spaces
- Address soil erosion, tree root exposure
- Keep development to open areas
- Conduct winter and summer ecological inventories
- Invasive plants in ravines
- 'Extreme' sports incompatible with preservation



SAFETY

- Enforce helmet rules
- Enforce dog leash rules
- Enforce bike rules
- Sight trees
- Safety phone
- Enforce littering rules
- Enforce open fire rules





1. sustainability

2. activity

3. sharing

1. sustainability