



HISTORICAL FLOOD LEVELS

FLOOD LEVEL	6.50m
April 30, 1973	8.61m
April 30, 1979	8.06m
April 14, 1993	6.60m
April 18, 1994	7.87m
April 30, 2005	7.83m
May 1, 2008	8.36m
Dec 2010	7.73m
May 2018	8.33m

TYPICAL SUMMER LEVEL 1.6m

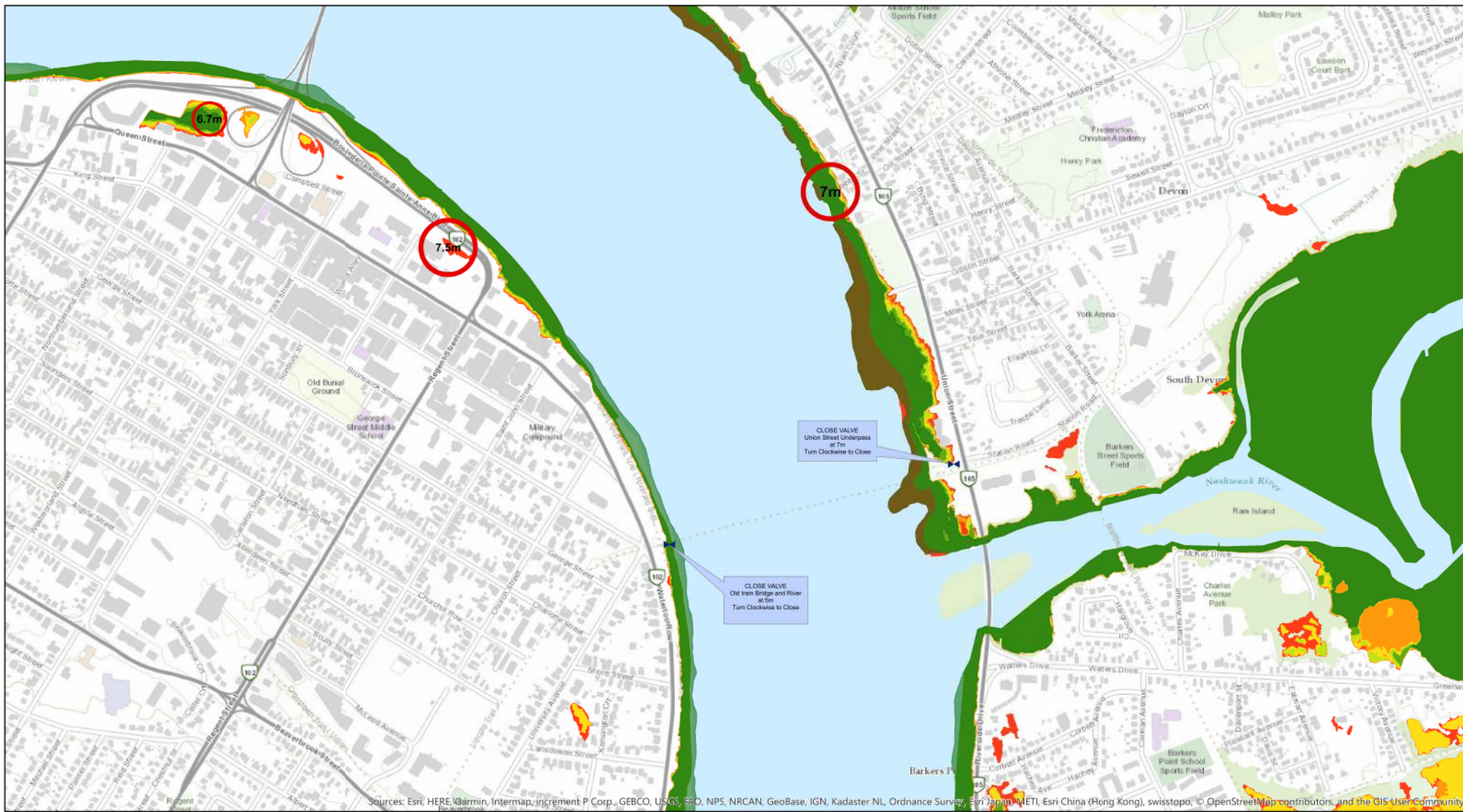


THIS MAP IS A GRAPHICAL REPRESENTATION OF FLOOD LEVEL BOUNDARIES AND SHOULD NOT BE USED FOR LEGAL DESCRIPTIONS

- Flood Zones**
- 7m
 - 7.1m
 - 7.2m
 - 7.3m
 - 7.4m
 - 7.5m
-  Flood Level
 Storm Gate Valves

FLOOD ZONE 7.0 - 7.5M

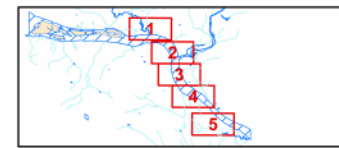




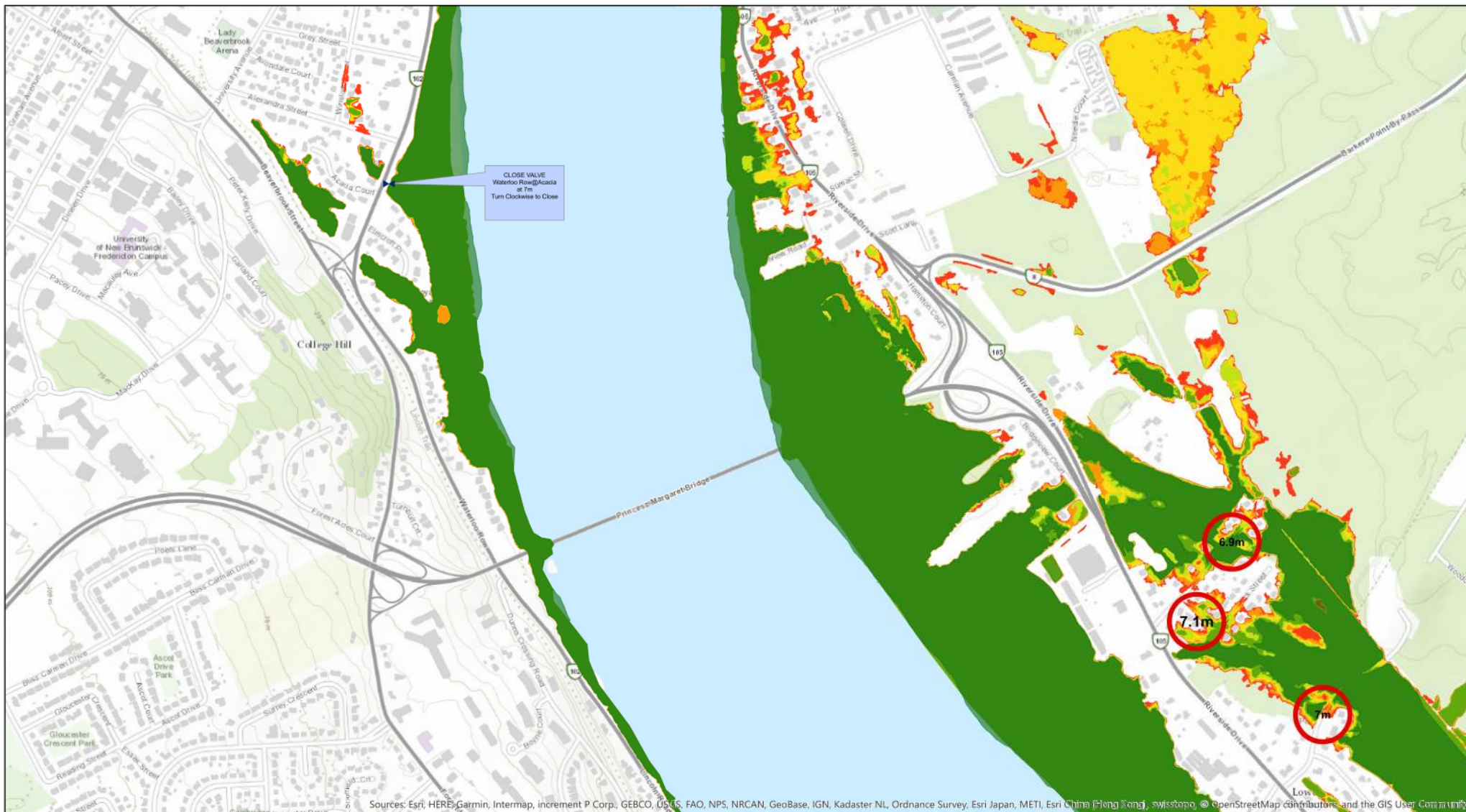
THIS MAP IS A GRAPHICAL REPRESENTATION OF FLOOD LEVEL BOUNDARIES AND SHOULD NOT BE USED FOR LEGAL DESCRIPTIONS

- Flood Zones**
- 7m
 - 7.1m
 - 7.2m
 - 7.3m
 - 7.4m
 - 7.5m
- Flood Level
▶ Storm Gate Valves

FLOOD ZONE 7.0 - 7.5M



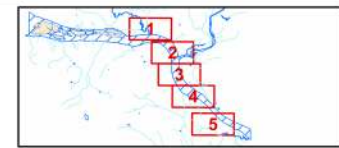
Sources: Esri, HERE, Garmin, Intermap, increment P Corp., GEBCO, USGS, ERO, NPS, NRCAN, GeoBase, IGN, Kadaster NL, Ordnance Survey, Esri Japan (METI), Esri China (Hong Kong), swisstopo, © OpenStreetMap contributors, and the GIS User Community

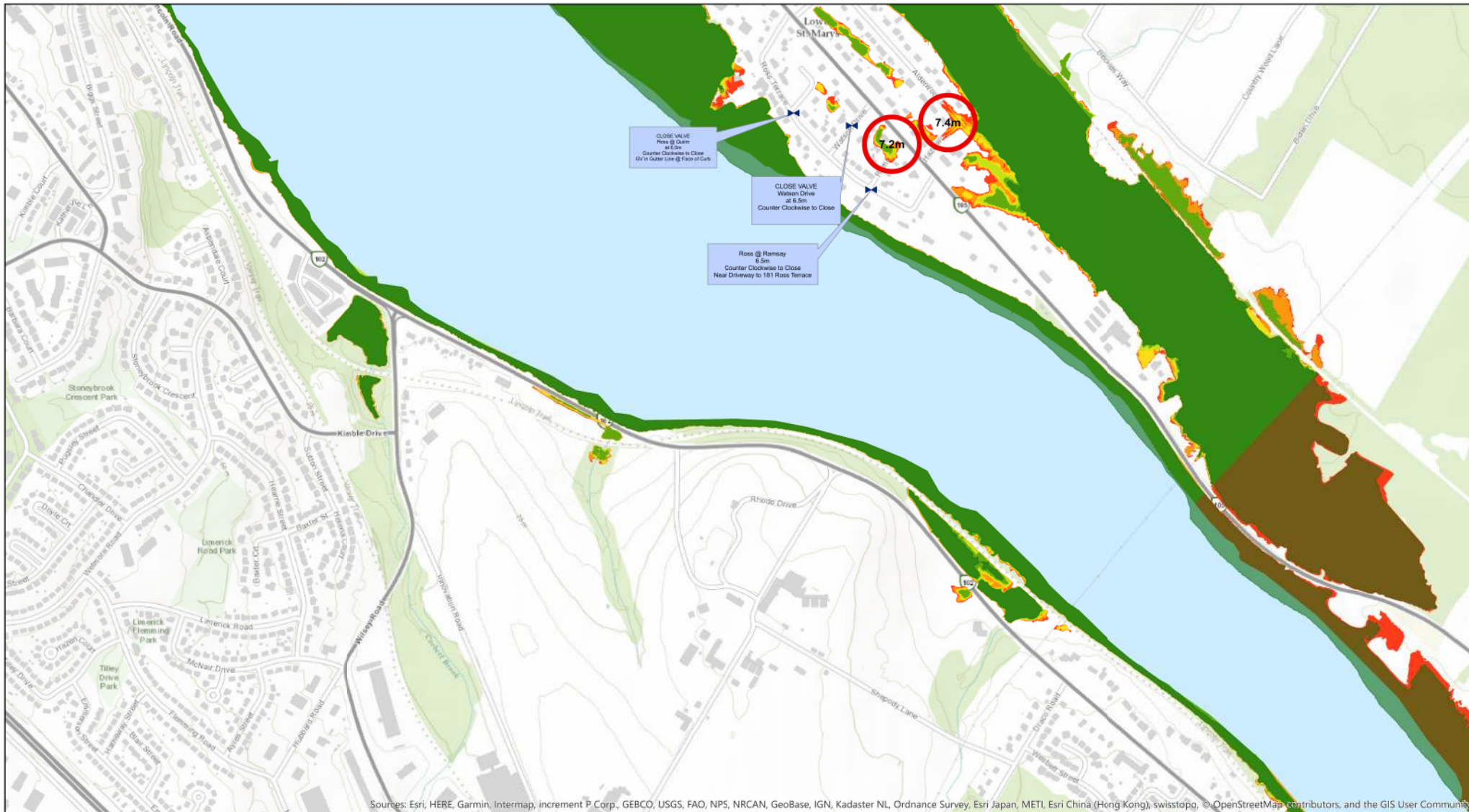


THIS MAP IS A GRAPHICAL REPRESENTATION OF FLOOD LEVEL BOUNDARIES AND SHOULD NOT BE USED FOR LEGAL DESCRIPTIONS

Sources: Esri, HERE, Garmin, Intermap, increment P Corp., GEBCO, USGS, FAO, NPS, NRCAN, GeoBase, IGN, Kadaster NL, Ordnance Survey, Esri Japan, METI, Esri China (Hong Kong), Swisstopo, © OpenStreetMap contributors, and the GIS User Community

FLOOD ZONE 7.0 - 7.5M



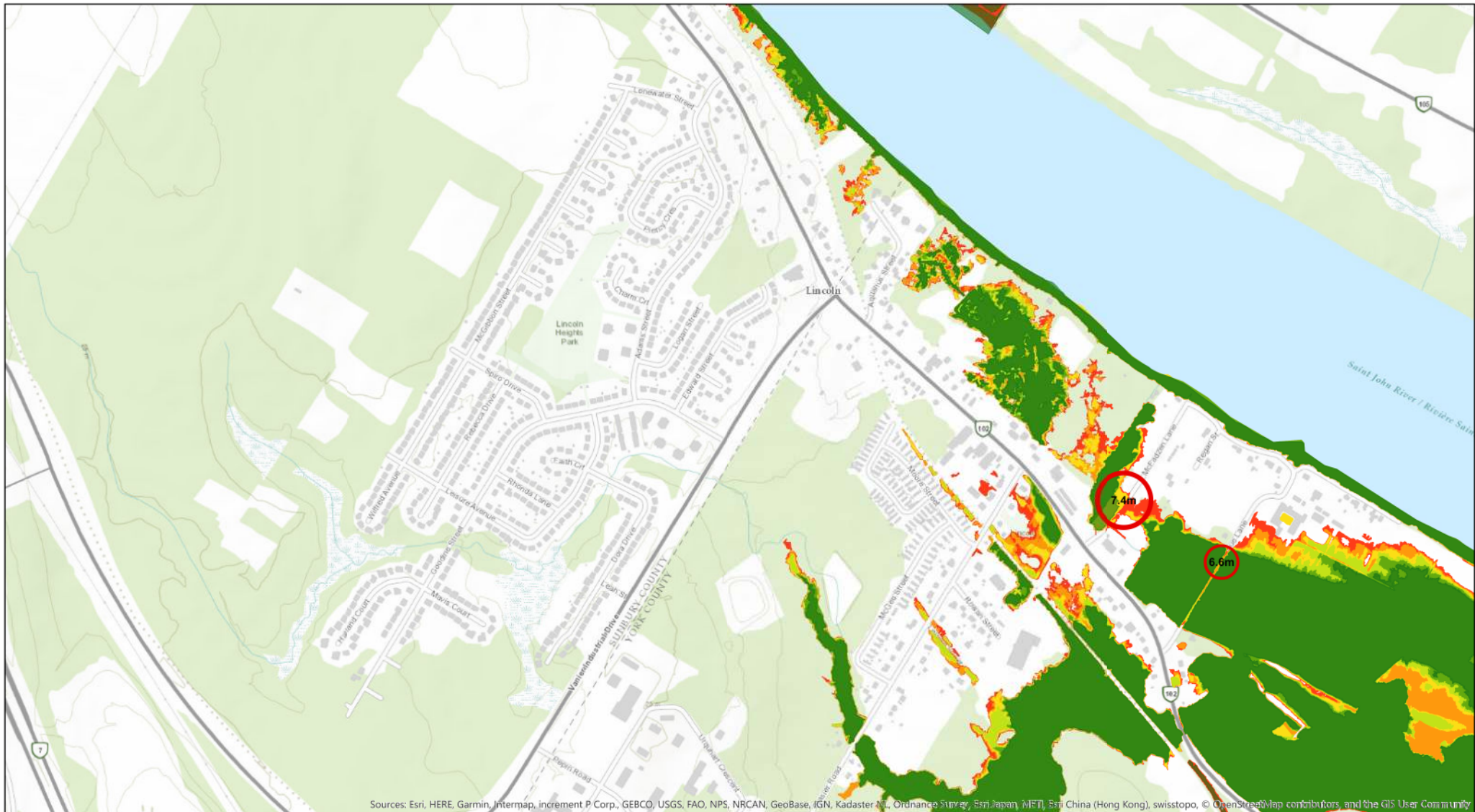


Sources: Esri, HERE, Garmin, Intermap, increment P Corp., GEBCO, USGS, FAO, NPS, NRCAN, GeoBase, IGN, Kadaster NL, Ordnance Survey, Esri Japan, METI, Esri China (Hong Kong), swisstopo, © OpenStreetMap contributors, and the GIS User Community

- Flood Zones**
- 7m
 - 7.1m
 - 7.2m
 - 7.3m
 - 7.4m
 - 7.5m
- Flood Level
▶ Storm Gate Valves

FLOOD ZONE 7.0 - 7.5M





THIS MAP IS A GRAPHICAL REPRESENTATION OF FLOOD LEVEL BOUNDARIES AND SHOULD NOT BE USED FOR LEGAL DESCRIPTIONS

- Flood Zones**
- 7m
 - 7.1m
 - 7.2m
 - 7.3m
 - 7.4m
 - 7.5m
- Flood Level
- ▶ Storm Gate Valves

FLOOD ZONE 7.0 - 7.5M

