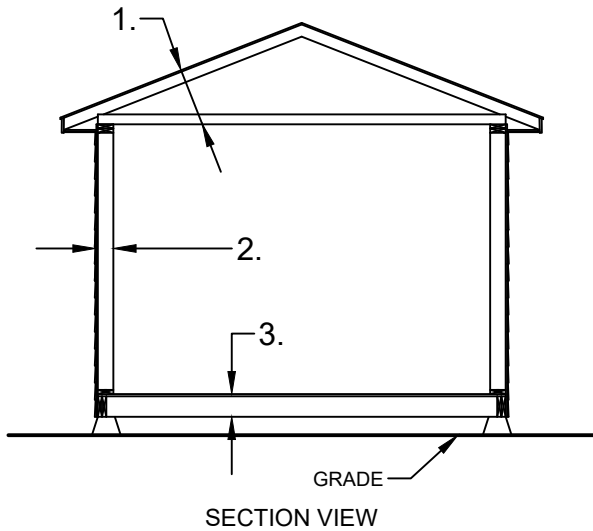
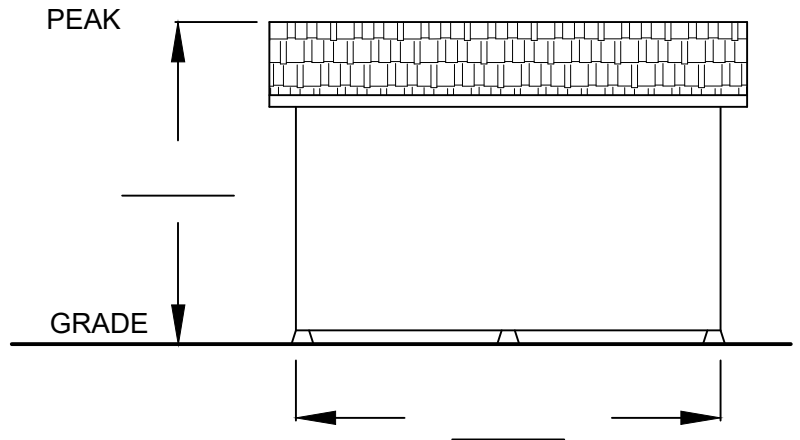
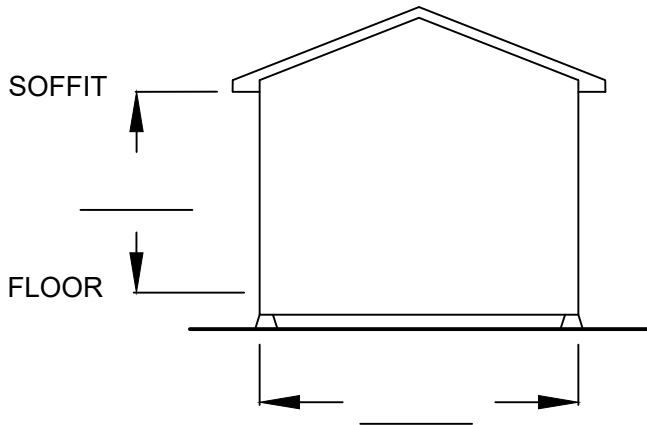
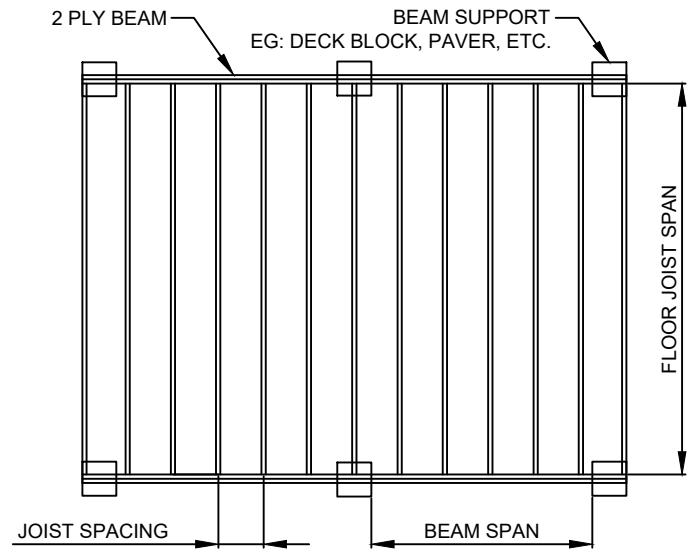


# TYPICAL ACCESSORY BUILDING (SHED) (FOR SHEDS OVER 120 SQ.FT AND UP TO 14' WIDE)

- PROVIDE DIMENSIONS INDICATED BELOW
- SHOW DOORS AND WINDOWS - INCLUDING SIZE



SECTION VIEW



TYPICAL FLOOR FRAMING

## 1. ROOF CONSTRUCTION

- ROOFING:       ASPHALT    METAL
- SHEATHING:    PLYWOOD    OSB    BOARDS   \_\_\_\_\_
- THICKNESS \_\_\_\_\_
- FRAMING:       PRE-ENGINEERED TRUSSES
- RAFTERS      SIZE \_\_\_\_\_ SPACING \_\_\_\_\_

## 2. WALL CONSTRUCTION

- EXTERIOR CLADDING:    TYPE \_\_\_\_\_
- AIR BARRIER:          TYPE \_\_\_\_\_
- SHEATHING:             PLYWOOD    OSB    BOARDS
- THICKNESS \_\_\_\_\_
- STUD:                    SIZE \_\_\_\_\_      SPACING \_\_\_\_\_

## 3. FLOOR CONSTRUCTION

- FLOOR SHEATHING:    THICKNESS \_\_\_\_\_ TYPE \_\_\_\_\_
- FLOOR JOIST:          SIZE \_\_\_\_\_      SPACING \_\_\_\_\_
- BEAM:                    SIZE \_\_\_\_\_      SPAN \_\_\_\_\_
- FLOOR FRAMING SUPPORTED DIRECTLY ON GRADE

### ACCEPTABLE SPANS FOR FLOOR BEAMS AND JOISTS

WOOD BEAM SIZE (CWC - THE SPAN BOOK 2009 EDITION)

WOOD BEAM SIZE	MAXIMUM FLOOR JOIST SPAN	
	14'	
	MAXIMUM SPAN OF WOOD BEAM BETWEEN SUPPORTS	
2-2 X 6	5' - 7"	
2-2 X 8	6' - 9"	
2-2 X 10	8' - 3"	

**NOTE: BEAM NOT REQUIRED IF FLOOR FRAMING IS SUPPORTED DIRECTLY ON GRADE**

WOOD JOIST SIZE (CWC - PRESCRIPTIVE RESIDENTIAL EXTERIOR WOOD DECK SPAN GUIDE)

JOIST LUMBER SIZE	SPACING OF JOISTS	MAXIMUM SPAN BETWEEN SUPPORTS	SPACING OF JOISTS	MAXIMUM SPAN BETWEEN SUPPORTS	SPACING OF JOISTS	MAXIMUM SPAN BETWEEN SUPPORTS
2 X 6	12"	9' - 4"	16"	8' - 6"	24"	7' - 5"
2 X 8	12"	12' - 4"	16"	11' - 2"	24"	9' - 9"
2 X 10	12"	15' - 9"	16"	14' - 4"	24"	12' - 6"

**NOTE: FOR LARGER FLOOR JOIST SPANS OR DIFFERENT SHED CONFIGURATIONS, PLEASE PROVIDE SIMILAR INFORMATION TO THE INSPECTIONS COUNTER FOR REVIEW.**