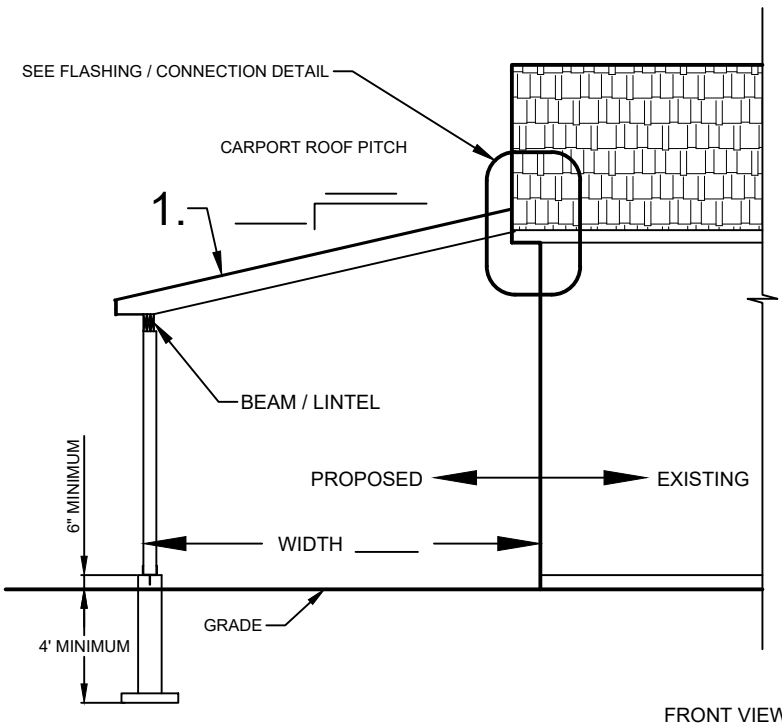
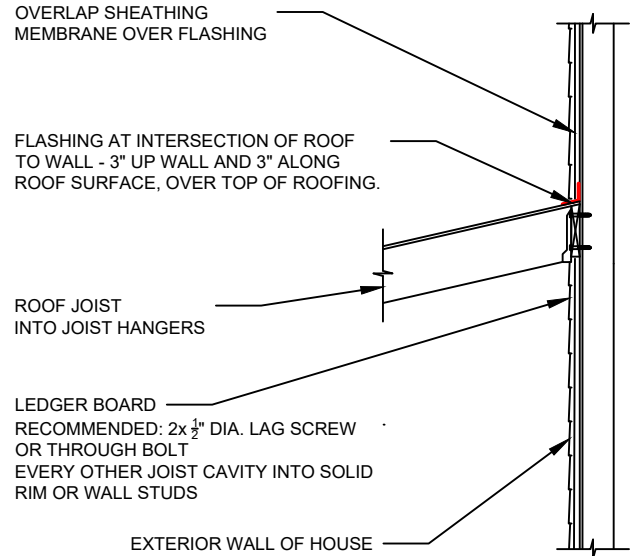


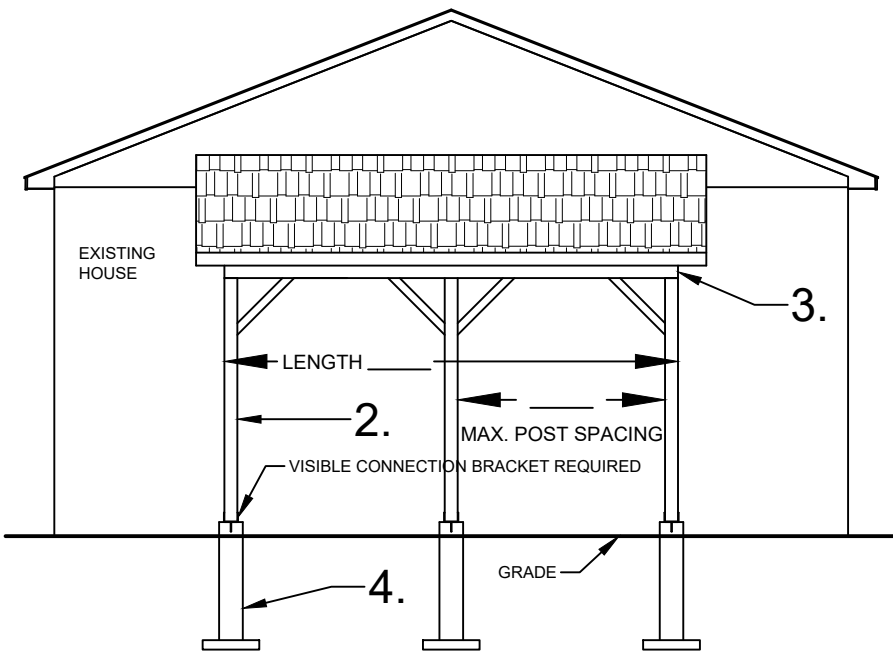
TYPICAL ATTACHED CARPORT - JOIST SHED ROOF



FRONT VIEW



FLASHING / CONNECTION DETAIL



SIDE VIEW

WOOD BEAM / LINTEL SIZE (CWC - "THE SPAN BOOK" 2009 EDITION)

BEAM	POST SPACING
3 - 2 X 10	6' - 1"
4 - 2 X 10	7' - 8"
3 - 2 X 12	9' - 4"
4 - 2 X 12	9' - 2"
ENGINEERED BEAM	TO BE DESIGNED

NOTE: THIS TABLE IS FOR MAXIMUM SUPPORTED LENGTH OF 8'.

SUPPORTED LENGTH MEANS 1/2 ROOF JOIST SPAN + OVERHANG

SPANS FOR ROOF JOISTS (CWC - "THE SPAN BOOK" 2009 EDITION)

S.P.F No 1 & 2

JOIST DEPTH	JOIST SPACING		
	12"	16"	24"
2 X 8	12' - 4"	11' - 3"	9' - 10"
2 X 10	15' - 9"	14' - 4"	12' - 6"
2 X 12	19' - 2"	17' - 5"	15' - 3"

CONSULT WITH BUILDING INSPECTIONS FOR GREATER SPANS.

1. ROOF CONSTRUCTION

- ROOFING: ASPHALT METAL
- SHEATHING: PLYWOOD OSB BOARDS _____
THICKNESS _____
- FRAMING: ROOF JOIST SIZE _____ SPACING _____
- *SEE SELECTION TABLE ABOVE

2. SUPPORT POST

- POST SIZE: 6 X 6 MINIMUM OTHER _____

3. BEAM / LINTEL

SIZE: _____ PLY _____ X _____

*SEE SELECTION TABLE ABOVE

4. FOUNDATION SUPPORT

10" MINIMUM CONCRETE PIER: 4' FROST PROTECTION MINIMUM

FOOTING SIZE: WIDTH _____ HEIGHT _____

*HELICAL SCREW PILES: SEE LINK FOR REQUIREMENTS